



THE ACRES







# WELCOME TO THE ACRES



# STEP INSIDE THE OUTDOORS



Welcome to The Acres, a brand-new community of standalone villas featuring impeccable surroundings enveloped by nature. Graced with serene gardens and azure lagoons, this exclusive neighbourhood harmonises with the undulating terrain, creating a space that's connected by meandering pathways to every corner of this ever-flourishing environment.

Discover The Acres, where every step inside brings you closer to the outdoors.







# LOCATION



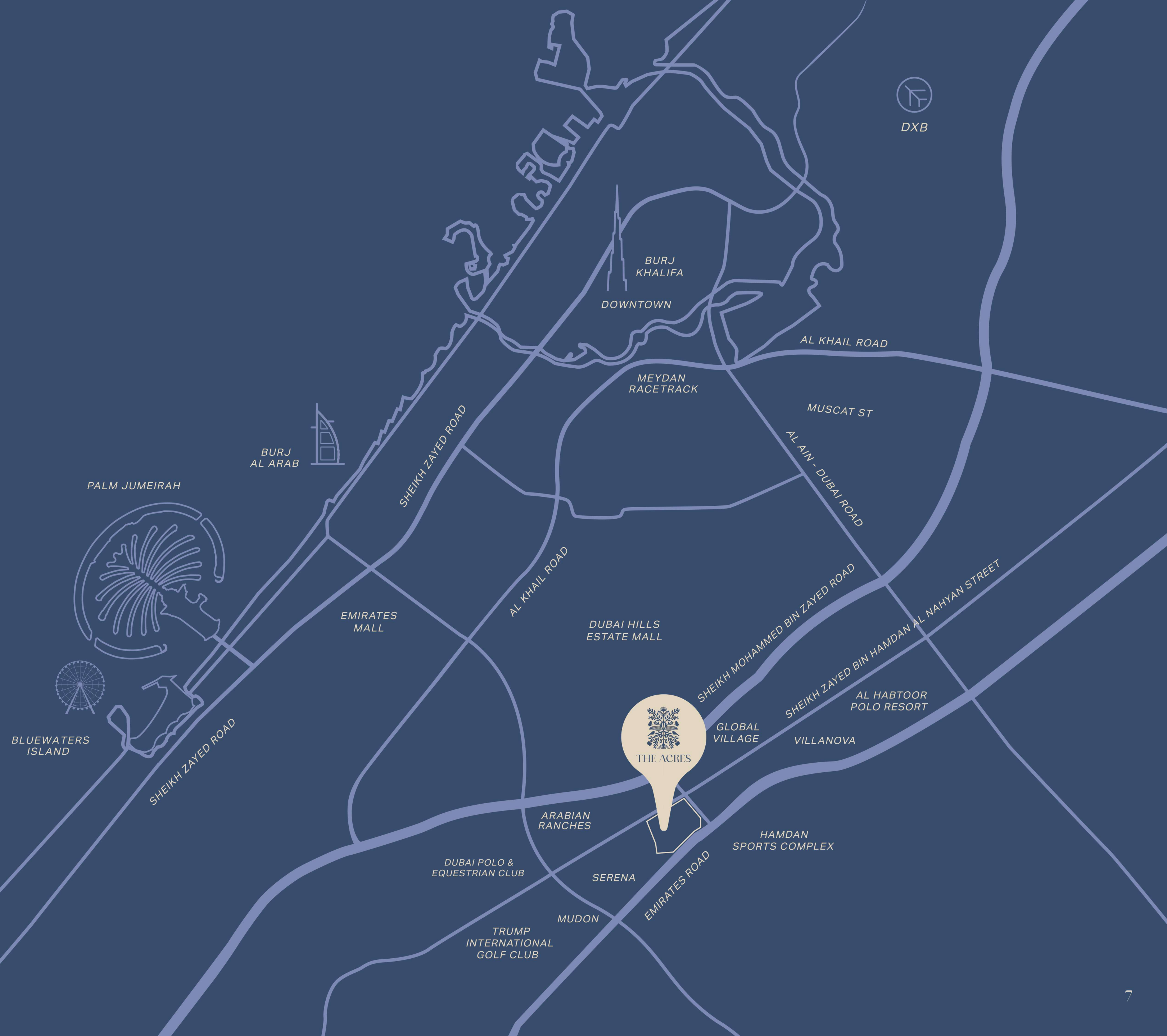
# IN THE MIDST OF NATURE

Discover a community unlike any other in Dubai. A prestigious location where modern luxury and the splendour of nature converge.

Centrally located within the Dubailand area with a very well-connected road network, the community has direct access to the city's Sheikh Zayed Bin Hamdan Al Nahyan Street and Emirates Road. The Acres enjoys a prime position surrounded by a number of fully developed neighbourhoods in its direct vicinity.

Just a 10-minute drive from the bustling Global Village and a mere 5 minutes from the esteemed Dubai Polo and Equestrian Club, and the Hamdan Sports Complex, The Acres is perfectly situated within an established area.

With a location so pivotal, The Acres promises more than just a home - it offers a hub of unparalleled convenience, where every journey around the city begins with ease, and every return is to a peaceful community embraced by nature.





# MASTERPLAN



# NATURE'S BLUEPRINT



Explore a world where bespoke villas find their home amongst flourishing surroundings, with lush parks that are conveniently located just a minute's stroll away, inviting you to effortlessly immerse yourself in the beauty of nature.

Nestled within the heart of this vibrant community are inviting swimmable lagoons, embraced by the serene beauty of a natural landscape. The Halo Loop Park that surrounds them seamlessly connects neighbourhoods, crafting a safe, people-centric environment with an abundance of open, green spaces. Thoughtfully designed natural park features create a distinctive setting that strengthens the bonds between homes, communities, and amenities, making this a neighbourhood unlike any other in Dubai.

**The Acres proudly showcases its commitment to sustainable and environmentally friendly practices through the 'LEED v4.1 Cities and Communities: Plan and Design' certification.**







# KEY FEATURES

- 1 ENTRANCE
- 2 PRIMARY SCHOOL
- 3 MOSQUE
- 4 HALO PARK / COMMUNITY PARK
- 5 CLUBHOUSE
- 6 RETAIL
- 7 KINDERGARTEN
- 8 LAGOON CLUBHOUSE
- 9 JUICE BAR
- 10 LAGOON - LAKE
- 11 COMMUNITY AMENITIES







# THE GARDENS



# IMMERSIVE AMENITIES



Discover an array of engaging amenities nestled within carefully curated gardens that foster enriching interactions with nature. These gardens strategically encircle the main park, creating a harmonious blend of natural beauty and recreation. Within this expansive and integrated green network, a variety of facilities and amenities, tailored to a diverse range of interests, are easily accessible for all to enjoy.

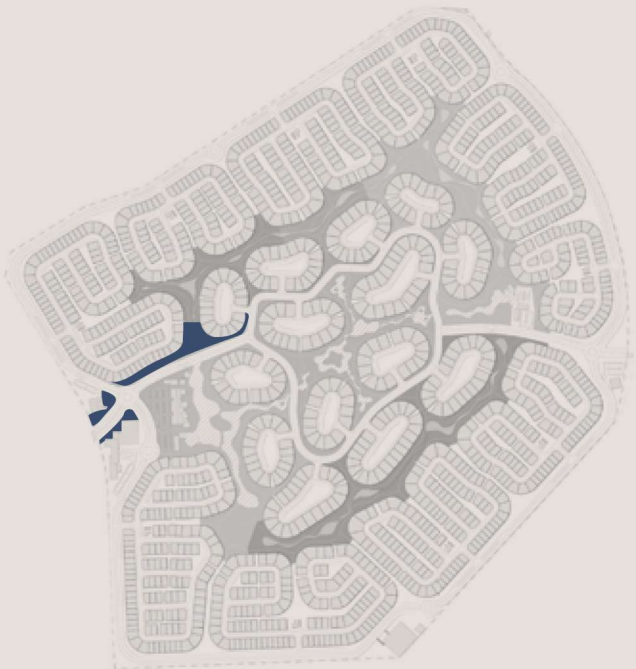




# ARRIVAL GARDEN

Walk into The Acres, where palm tree-lined boulevards extend the warmest of welcomes. Here, you'll find the forest theatre, where nature and art meet, and the mosque plaza that sets the tone of peace. Each step in the Arrival Garden offers a calming glimpse into the greater environment that awaits within The Acres.

ARRIVAL AREA • CLUSTER GARDENS • BOULEVARD  
FOREST THEATRE • MOSQUE PLAZA

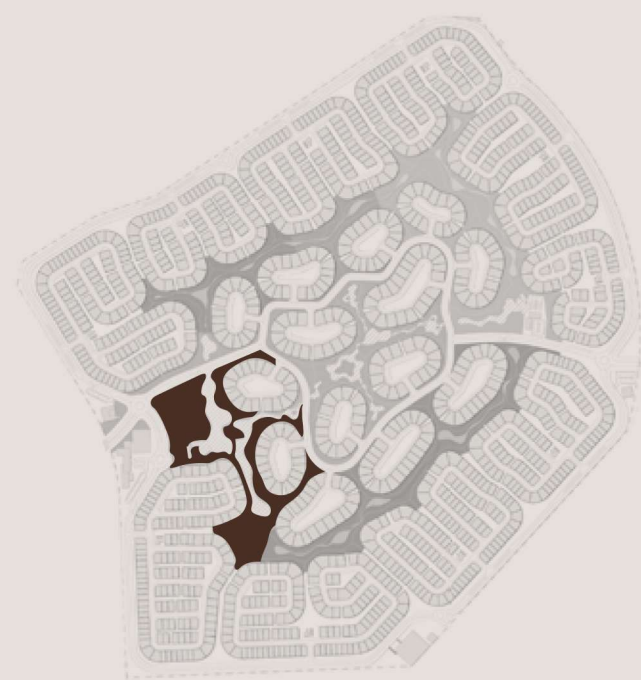




## VILLAGE GARDEN

Immerse yourself in the bustling ripe markets, discovering the fresh, flavourful treats. Soothe your senses by the waterfront seating and meander along the retail promenade. In the Village Garden, every corner tells a tale of community, recreation, and natural charm.

ADVENTURE PARK • RETAIL PROMENADE • RIPE MARKET  
COMMUNITY CLUBHOUSE • PRIMARY SCHOOL • KINDERGARTEN  
HEALTHCARE • SPORTS AREAS • EVENT LAWN & EVENT ISLAND



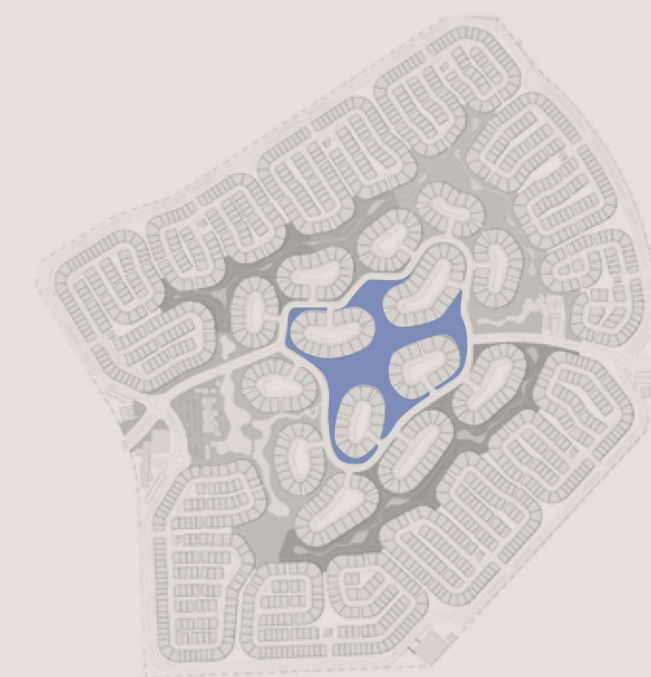




## LAGOON GARDEN

In the singular calmness of The Acres' lagoons, water becomes a canvas for both leisure and play. Nestled within this aquatic playground are swimmable lagoons and floating decks inviting you for a refreshing dip all year round.

CLUSTER GARDENS • SWIMMABLE LAGOONS & LAKES  
LAGOON CLUBHOUSE • SPORTS AREAS  
JOGGING TRACKS • FLOATING DECKS

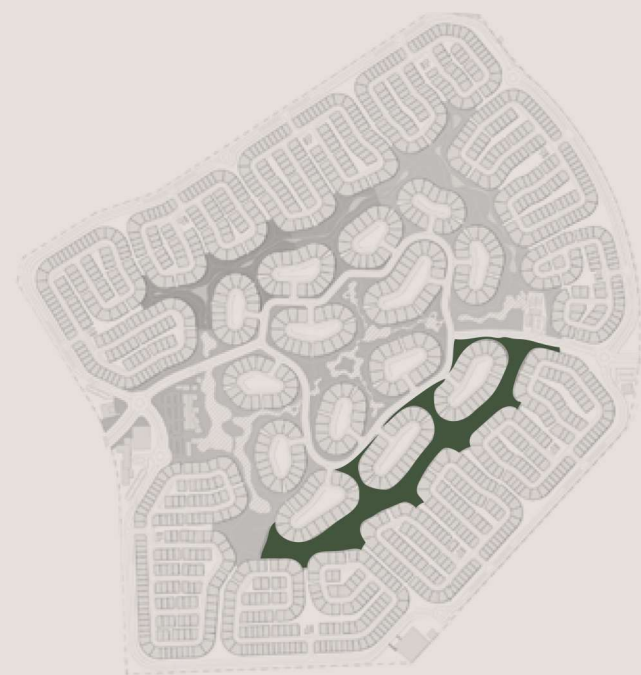




## NATURE GARDEN

Step into a scene of conservation, where the wetlands and natural ponds offer nature's finer treasures. Relax in the wellness garden and take leisurely strolls along the dry wadi trails and wetland parks.

COMMUNITY PAVILION • OUTDOOR GYM • NATURAL PONDS  
DRY WADI TRAIL / WETLAND PARK • WELLNESS GARDEN  
KIDS' PLAY AREAS • OUTDOOR TERRACE



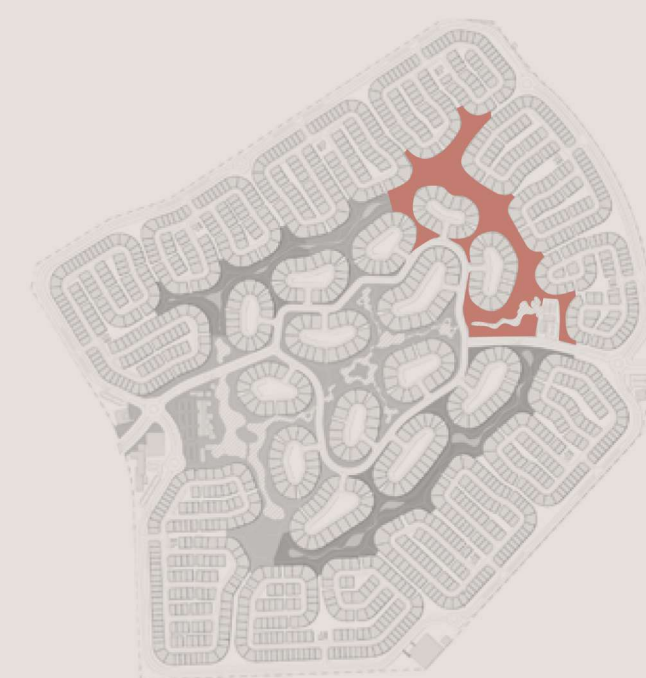




## LOST GARDEN

This charming corner beckons you into a world of discovery, from the enchanting land art trail to the adventurous treehouses that offer a novel perspective on the surroundings. With crafting stations, forest terraces, and water features, the Lost Garden provides both a fun and fascinating escape.

COMMUNITY PAVILION • KIDS' PLAY AREAS • DOG PARKS  
GARDEN MAJLIS • FOREST TERRACES • CRAFTING STATIONS  
TREEHOUSE VIEWING DECK • CLUBHOUSE

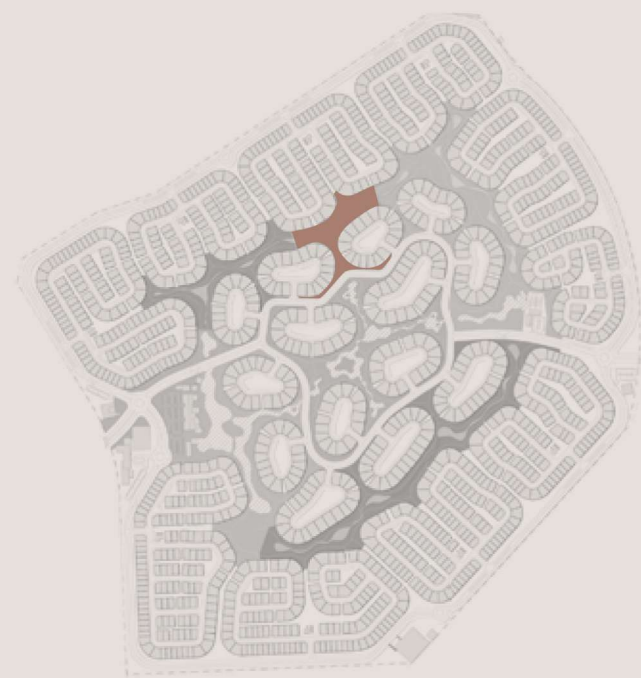




## PERFUME GARDEN

Wander through the gardens as each blossom treats your senses. The mystical appeal of the place with the wetlands and ponds creates a harmonious atmosphere, making this garden a picture-perfect representation of flora and fauna.

CLUSTER GARDENS • PERENNIAL GARDEN • ART GARDEN



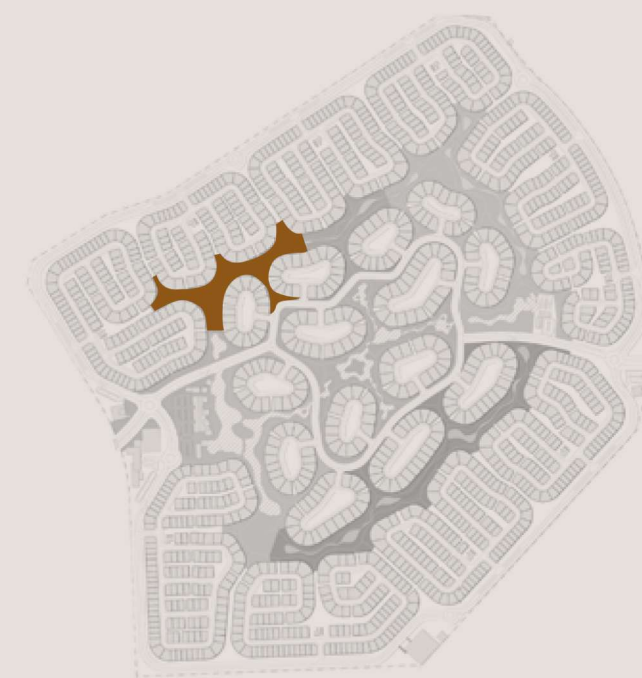




## EDIBLE GARDEN

This green expanse invites you to explore a garden where fragrant herbs offer a touch of culinary magic. Here, you have the dining oasis that houses the freshest natural offerings to be enjoyed in a beautiful al fresco setting.

CLUSTER GARDENS • KIDS' PLAY AREAS  
HERBAL GARDEN • ORCHARD GARDEN







# THE FIRST RELEASE



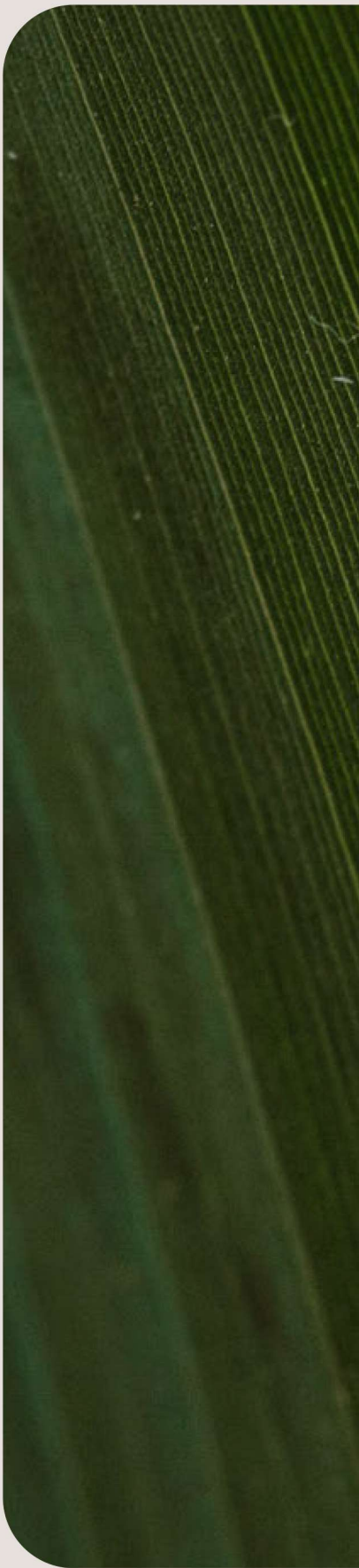
# A STEP CLOSER TO THE OUTDOORS

Discover The Acres' exquisite 3 to 5-bedroom villas, distinguished by their signature outdoor rooms and rear gardens that merge with the nature around you and offer the most refined living space.

The villas' contemporary design, characterised by an open-plan layout, double-height living spaces and floor-to-ceiling windows, effortlessly brings the captivating flora indoors where nature is a natural part of everyday living.







## SHAPED BY NATURE

The architecture and design philosophy at The Acres is a testament to a harmonious alliance between modern luxury and nature. Inspired by the elements, the architecture proudly features stone, wood and glass crafting a visual symphony that mirrors the natural surroundings.

The villas feature contemporary palettes that bathe the walls in light, while the sleek structures maximise exposure, creating a continuous interaction with the lush environment.





# THE VILLAS







VILLA TYPE B

## 3-BEDROOM VILLA

The Acres' commitment to harmonious living can be seen in its 3-bedroom villas. The garden facade provides views of lush surroundings, encouraging a life entwined with nature. Inside, the home features a side courtyard with living spaces designed for intimate family moments. The master bedroom on the first floor offers a view of the pool and frames park vistas. Additionally, a family area and a spacious shaded terrace on the second floor seamlessly blend the home's sanctuary with the wild beauty of the parklands.





VILLA TYPE B



## 4-BEDROOM VILLA

The 4-bedroom villa at The Acres provides a peaceful home with a distinctive feature—the stone wall. It anchors the home’s aesthetic, seamlessly blending privacy with architectural finesse. The master bedroom offers elevated park views, while the top-floor multi-purpose room extends to a spacious shaded terrace, providing a personal oasis overlooking the community. Each interior touchpoint is carefully crafted for privacy, luxury, and a seamless connection with the natural tapestry of The Acres.



VILLA TYPE A – S





VILLA TYPE A - S





VILLA TYPE D





VILLA TYPE C - S

## 5-BEDROOM VILLA

Crafted with an eye for luxury and pure elegance, The Acres' 5-bedroom villa features a facade that impresses with clean lines, creating selective openings on the street side to maximise privacy. In contrast, the thoughtful placement of large openings with full-length windows facing the courtyard invites the garden's tranquility into each room. The heart of the home unfolds in a double-height living area, with an open-plan design that blurs boundaries and extends living spaces into a shaded courtyard.























MEERAAS



Meraas is committed to creating and consistently delivering developments that strengthen Dubai's position as a global real estate investment destination of choice. Offering an extensive range of master developments, land, and property, Meraas continues its legacy of developing well-known destinations and prominent landmarks, creating well-designed and coveted lifestyle experiences.

Its cutting-edge portfolio comprises leading developments across waterfront, urban, and suburban locations in Dubai, such as Port de La Mer, City Walk Residences, Bluewaters Residences, Nikki Beach Residences, BVLGARI Residences, and Cherrywoods, to name a few. Meraas emphasises sophistication and innovation to offer best in class residential developments that appeal to a diverse customer base globally.







THE ACRES

# 3 BEDROOMS

## VILLA TYPE B-3BR

TOTAL AREA: 283.22 SQM | 3,048.55 SQFT



GROUND LEVEL



FIRST LEVEL

DISCLAIMER: PLANS, DETAILS AND UNIT ORIENTATION INCLUDED ARE INDICATIVE ONLY AND ARE SUBJECT TO CHANGE BY THE DEVELOPER/SELLER AT ITS SOLE DISCRETION WITHOUT NOTICE AND/OR LIABILITY. ALL IMAGES, INCLUDING FEATURES, FINISHES, FURNISHINGS, VIEW AND SCALE ARE ILLUSTRATIVE ONLY. FINAL AREAS, ORIENTATION, DIMENSIONS, LAYOUT AND MATERIALS MAY DIFFER FROM THOSE STATES.





THE ACRES

# 3 BEDROOMS

## VILLA TYPE B-3BR(M)

TOTAL AREA: 283.23 SQM | 3,048.66 SQFT



GROUND LEVEL



FIRST LEVEL

DISCLAIMER: PLANS, DETAILS AND UNIT ORIENTATION INCLUDED ARE INDICATIVE ONLY AND ARE SUBJECT TO CHANGE BY THE DEVELOPER/SELLER AT ITS SOLE DISCRETION WITHOUT NOTICE AND/OR LIABILITY. ALL IMAGES, INCLUDING FEATURES, FINISHES, FURNISHINGS, VIEW AND SCALE ARE ILLUSTRATIVE ONLY. FINAL AREAS, ORIENTATION, DIMENSIONS, LAYOUT AND MATERIALS MAY DIFFER FROM THOSE STATES.



The background features a close-up of daisy flowers on the left side, with their white petals and yellow centers. The rest of the image is covered by a dark brown, semi-transparent overlay that contains large, flowing, abstract shapes in a lighter, muted brown color. The text is positioned on the left side of the dark overlay.

# 4-BEDROOM VILLAS





THE ACRES

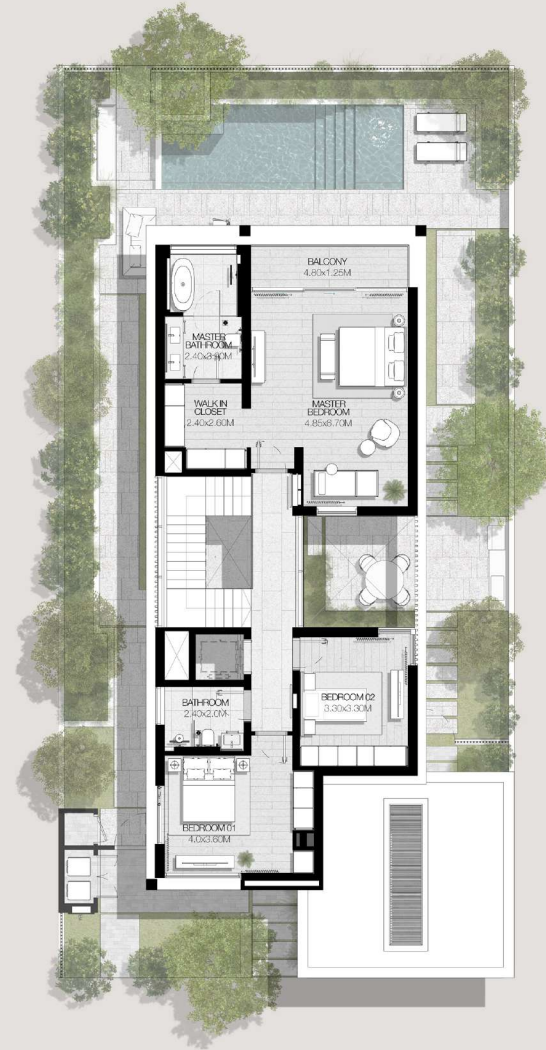
## 4 BEDROOMS

### VILLA TYPE A-4S

TOTAL AREA: 370.33 SQM | 3,986.74 SQFT



GROUND LEVEL



FIRST LEVEL



SECOND LEVEL

DISCLAIMER: PLANS, DETAILS AND UNIT ORIENTATION INCLUDED ARE INDICATIVE ONLY AND ARE SUBJECT TO CHANGE BY THE DEVELOPER/SELLER AT ITS SOLE DISCRETION WITHOUT NOTICE AND/OR LIABILITY. ALL IMAGES, INCLUDING FEATURES, FINISHES, FURNISHINGS, VIEW AND SCALE ARE ILLUSTRATIVE ONLY. FINAL AREAS, ORIENTATION, DIMENSIONS, LAYOUT AND MATERIALS MAY DIFFER FROM THOSE STATES.





THE ACRES

# 4 BEDROOMS

VILLA TYPE A-4S(M)

TOTAL AREA: 370.33 SQM | 3,986.74 SQFT



GROUND LEVEL



FIRST LEVEL



SECOND LEVEL

DISCLAIMER: PLANS, DETAILS AND UNIT ORIENTATION INCLUDED ARE INDICATIVE ONLY AND ARE SUBJECT TO CHANGE BY THE DEVELOPER/SELLER AT ITS SOLE DISCRETION WITHOUT NOTICE AND/OR LIABILITY. ALL IMAGES, INCLUDING FEATURES, FINISHES, FURNISHINGS, VIEW AND SCALE ARE ILLUSTRATIVE ONLY. FINAL AREAS, ORIENTATION, DIMENSIONS, LAYOUT AND MATERIALS MAY DIFFER FROM THOSE STATES.







THE ACRES

# 4 BEDROOMS

## VILLA TYPE D-4BR

TOTAL AREA: 380.10 SQM | 4,091.36 SQFT



GROUND LEVEL



FIRST LEVEL

DISCLAIMER: PLANS, DETAILS AND UNIT ORIENTATION INCLUDED ARE INDICATIVE ONLY AND ARE SUBJECT TO CHANGE BY THE DEVELOPER/SELLER AT ITS SOLE DISCRETION WITHOUT NOTICE AND/OR LIABILITY. ALL IMAGES, INCLUDING FEATURES, FINISHES, FURNISHINGS, VIEW AND SCALE ARE ILLUSTRATIVE ONLY. FINAL AREAS, ORIENTATION, DIMENSIONS, LAYOUT AND MATERIALS MAY DIFFER FROM THOSE STATES.





THE ACRES

## 4 BEDROOMS

### VILLA TYPE D-4BR(M)

TOTAL AREA: 380.10 SQM | 4,091.36 SQFT



GROUND LEVEL



FIRST LEVEL

DISCLAIMER: PLANS, DETAILS AND UNIT ORIENTATION INCLUDED ARE INDICATIVE ONLY AND ARE SUBJECT TO CHANGE BY THE DEVELOPER/SELLER AT ITS SOLE DISCRETION WITHOUT NOTICE AND/OR LIABILITY. ALL IMAGES, INCLUDING FEATURES, FINISHES, FURNISHINGS, VIEW AND SCALE ARE ILLUSTRATIVE ONLY. FINAL AREAS, ORIENTATION, DIMENSIONS, LAYOUT AND MATERIALS MAY DIFFER FROM THOSE STATES.





# 5-BEDROOM VILLAS





THE ACRES

# 5 BEDROOMS

## VILLA TYPE C-5S

TOTAL AREA: 461.00 SQM | 4,962.16 SQFT



GROUND LEVEL



FIRST LEVEL



SECOND LEVEL

DISCLAIMER: PLANS, DETAILS AND UNIT ORIENTATION INCLUDED ARE INDICATIVE ONLY AND ARE SUBJECT TO CHANGE BY THE DEVELOPER/SELLER AT ITS SOLE DISCRETION WITHOUT NOTICE AND/OR LIABILITY. ALL IMAGES, INCLUDING FEATURES, FINISHES, FURNISHINGS, VIEW AND SCALE ARE ILLUSTRATIVE ONLY. FINAL AREAS, ORIENTATION, DIMENSIONS, LAYOUT AND MATERIALS MAY DIFFER FROM THOSE STATES.







THE ACRES

# 5 BEDROOMS

## VILLA TYPE C-5S(M)

TOTAL AREA: 461.00 SQM | 4,962.16 SQFT



GROUND LEVEL



FIRST LEVEL



SECOND LEVEL

DISCLAIMER: PLANS, DETAILS AND UNIT ORIENTATION INCLUDED ARE INDICATIVE ONLY AND ARE SUBJECT TO CHANGE BY THE DEVELOPER/SELLER AT ITS SOLE DISCRETION WITHOUT NOTICE AND/OR LIABILITY. ALL IMAGES, INCLUDING FEATURES, FINISHES, FURNISHINGS, VIEW AND SCALE ARE ILLUSTRATIVE ONLY. FINAL AREAS, ORIENTATION, DIMENSIONS, LAYOUT AND MATERIALS MAY DIFFER FROM THOSE STATES.





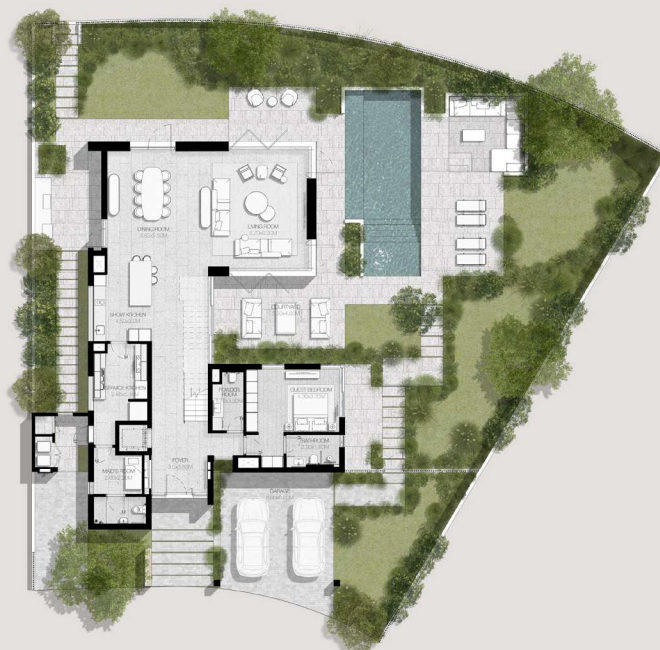


THE ACRES

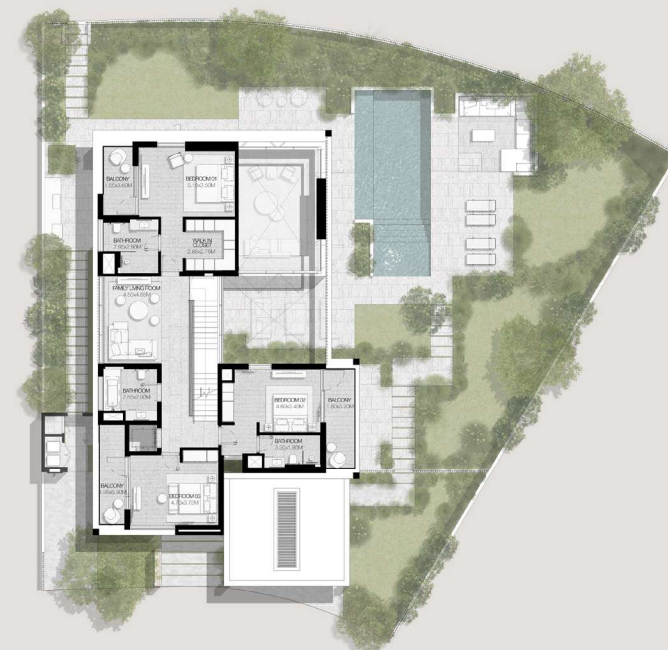
# 5 BEDROOMS

VILLA TYPE E-5BR

TOTAL AREA: 552.25 SQM | 5,944.37 SQFT



GROUND LEVEL



FIRST LEVEL



SECOND LEVEL

DISCLAIMER: PLANS, DETAILS AND UNIT ORIENTATION INCLUDED ARE INDICATIVE ONLY AND ARE SUBJECT TO CHANGE BY THE DEVELOPER/SELLER AT ITS SOLE DISCRETION WITHOUT NOTICE AND/OR LIABILITY. ALL IMAGES, INCLUDING FEATURES, FINISHES, FURNISHINGS, VIEW AND SCALE ARE ILLUSTRATIVE ONLY. FINAL AREAS, ORIENTATION, DIMENSIONS, LAYOUT AND MATERIALS MAY DIFFER FROM THOSE STATES.







THE ACRES

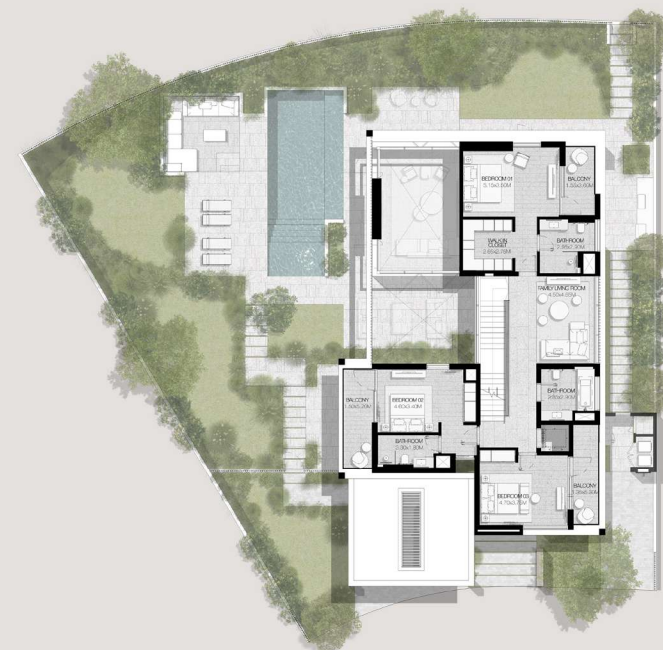
# 5 BEDROOMS

VILLA TYPE E-5BR(M)

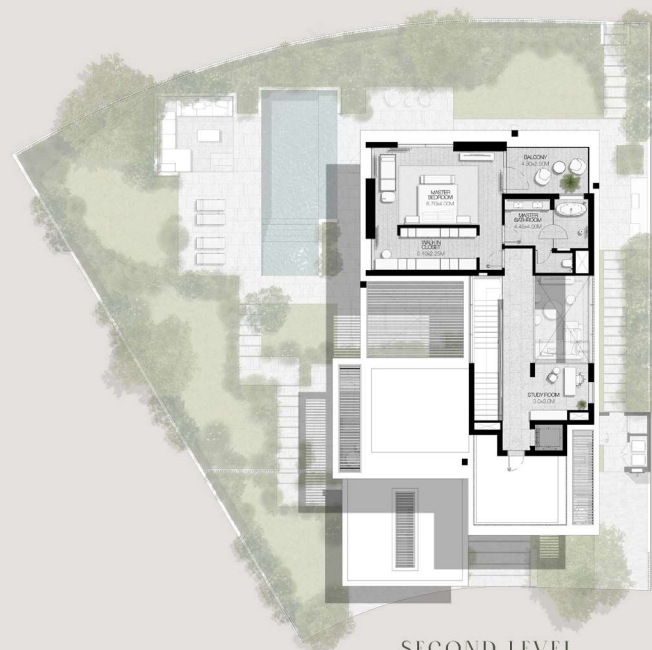
TOTAL AREA: 552.26 SQM | 5,944.48 SQFT



GROUND LEVEL



FIRST LEVEL



SECOND LEVEL

DISCLAIMER: PLANS, DETAILS AND UNIT ORIENTATION INCLUDED ARE INDICATIVE ONLY AND ARE SUBJECT TO CHANGE BY THE DEVELOPER/SELLER AT ITS SOLE DISCRETION WITHOUT NOTICE AND/OR LIABILITY. ALL IMAGES, INCLUDING FEATURES, FINISHES, FURNISHINGS, VIEW AND SCALE ARE ILLUSTRATIVE ONLY. FINAL AREAS, ORIENTATION, DIMENSIONS, LAYOUT AND MATERIALS MAY DIFFER FROM THOSE STATES.







THE ACRES

# 5 BEDROOMS

## VILLA TYPE F-5BR

TOTAL AREA: 557.55 SQM | 6,001.42 SQFT



GROUND LEVEL



FIRST LEVEL



SECOND LEVEL

DISCLAIMER: PLANS, DETAILS AND UNIT ORIENTATION INCLUDED ARE INDICATIVE ONLY AND ARE SUBJECT TO CHANGE BY THE DEVELOPER/SELLER AT ITS SOLE DISCRETION WITHOUT NOTICE AND/OR LIABILITY. ALL IMAGES, INCLUDING FEATURES, FINISHES, FURNISHINGS, VIEW AND SCALE ARE ILLUSTRATIVE ONLY. FINAL AREAS, ORIENTATION, DIMENSIONS, LAYOUT AND MATERIALS MAY DIFFER FROM THOSE STATES.







THE ACRES

# 5 BEDROOMS

## VILLA TYPE F-5BR(M)

TOTAL AREA: 557.55 SQM | 6,001.42 SQFT



GROUND LEVEL



FIRST LEVEL



SECOND LEVEL

DISCLAIMER: PLANS, DETAILS AND UNIT ORIENTATION INCLUDED ARE INDICATIVE ONLY AND ARE SUBJECT TO CHANGE BY THE DEVELOPER/SELLER AT ITS SOLE DISCRETION WITHOUT NOTICE AND/OR LIABILITY. ALL IMAGES, INCLUDING FEATURES, FINISHES, FURNISHINGS, VIEW AND SCALE ARE ILLUSTRATIVE ONLY. FINAL AREAS, ORIENTATION, DIMENSIONS, LAYOUT AND MATERIALS MAY DIFFER FROM THOSE STATES.







# THE ACRES



## STARTING PRICE

5.09M

3-BEDROOM  
VILLA

6.79M

4-BEDROOM  
VILLA

10M

5-BEDROOM  
VILLA

\*ALL PRICES ARE IN AED



## PAYMENT PLAN

5%

ON BOOKING

5%

ON SPA SIGNING

10%

MAY 2024

10%

SEPTEMBER 2024

5%

DECEMBER 2024

5%

MARCH 2025

5%

JUNE 2025

5%

SEPTEMBER 2025

5%

DECEMBER 2025

5%

MARCH 2026

5%

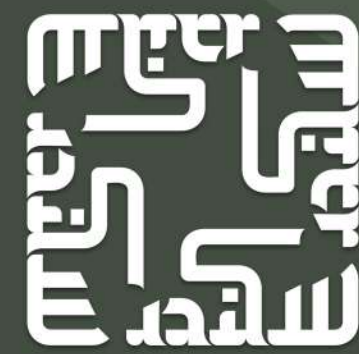
JUNE 2026

35%

OCTOBER 2027  
(ON HANDOVER)

\*ESTIMATED CONSTRUCTION COMPLETION OCTOBER 2027





# SIKANDAR

a RERA-certified Dubai realtor



+971 58 561 3700

[www.sikandar.ae](http://www.sikandar.ae)



sikandar



syedsikandar369



syedsikandar369



sikandar369