

NAKHEEL'S DESIGN VISION

“ I W A N T D U B A I T O B E N U M B E R
O N E . N O T I N T H E R E G I O N , B U T
I N T H E W O R L D . N U M B E R O N E I N
E V E R Y T H I N G : H I G H E D U C A T I O N ,
H E A L T H , A N D H O U S I N G .
I W A N T T O G I V E M Y P E O P L E T H E
H I G H E S T W A Y O F L I V I N G . ”

H.H Sheikh Mohammed bin Rashid Al Maktoum
UAE VICE-PRESIDENT, PRIME MINISTER, AND RULER OF DUBAI

Cities, as dreams, are built by desires.

Nakheel is a world-leading master developer, delivering award-winning projects united by the same endless pursuit of perfection. Nakheel creates new worlds to build a new happiness: not a passing and evanescent happiness, but something to leave behind, something that will inspire those who come after us. The pursuit of perfection and happiness is a real journey, culminating in the realisation of Palm Jebel Ali: a pinnacle of engineering, design excellence and Dubai living. This project is unlike any other; it symbolises a journey not just of a company, but of a nation.

A journey that will involve men, women, and families: all will desire to experience the wonder of colour, the music of emotion, the excellence of shape, and the

harmony of nature – the unprecedented and exclusive world of Palm Jebel Ali.

In bringing together leading designers with a variety of influences and experiences, two magnificent collections of distinctive villas have been created. With inspiration ranging from vernacular architecture to the sunlit coastal setting to ultra-luxurious materials, this combination of creative minds has ensured that each villa that lines the fronds of Palm Jebel Ali will have a truly unique style and character. Each home will offer an unrivalled living experience to its residents.

This is your home. This is Palm Jebel Ali.

1. A C U R A T E D C O L L E C T I O N

T H E
C O R A L V I L L A S

Serenity By The Sea

In a coral villa, happiness flows endlessly.

Beachfront living at its finest	—	p.6
An iconic neighbourhood	—	p.15
Introducing the Coral Collection	—	p.20

2. L I V E I N T H E M A S T E R P I E C E

O W N A P I E C E
O F H I S T O R Y

The Coral Collection	—	p.28
Villa Terracotta	—	p.34

A C U R A T E D C O L L E C T I O N

T H E
C O R A L
V I L L A S

1



Serenity By The Sea

Beachfront living at its finest
An iconic neighbourhood
Introducing the Coral Collection

— P.6
— P.15
— P.20

— BEACHFRONT LIVING AT ITS FINEST

SUN, SEA, SAND, & SOPHISTICATION

ALL YOUR **DESIRES** HAVE
FOUND A HOME.

Welcome to Palm Jebel Ali, a world-class lifestyle destination meticulously designed and impeccably curated, providing unrivalled luxury living to its residents.

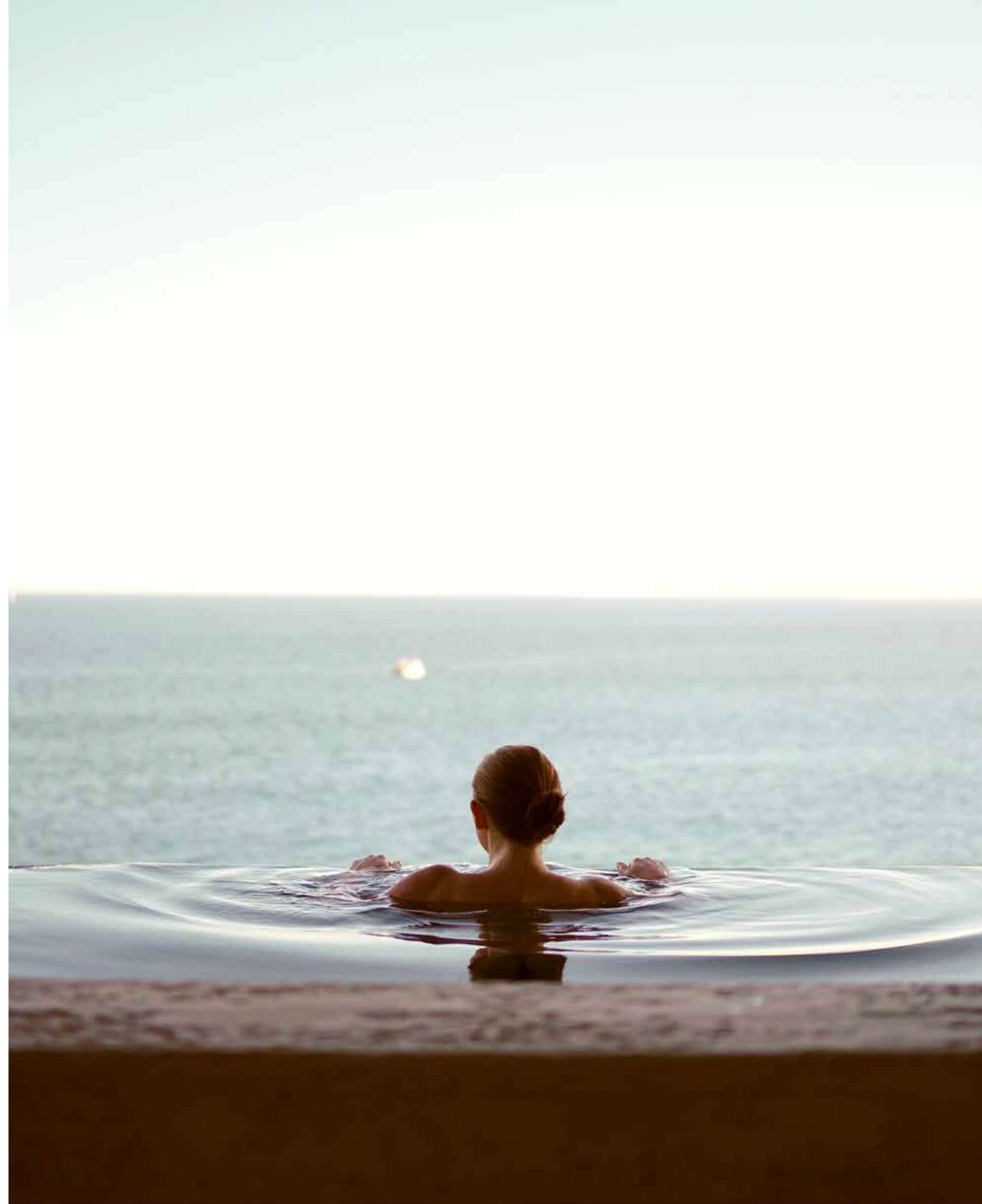


Live a life of **serenity and comfort** in Dubai's most coveted district, a true kaleidoscope born out of colourful greenery, azure waters, and pristine white sands.

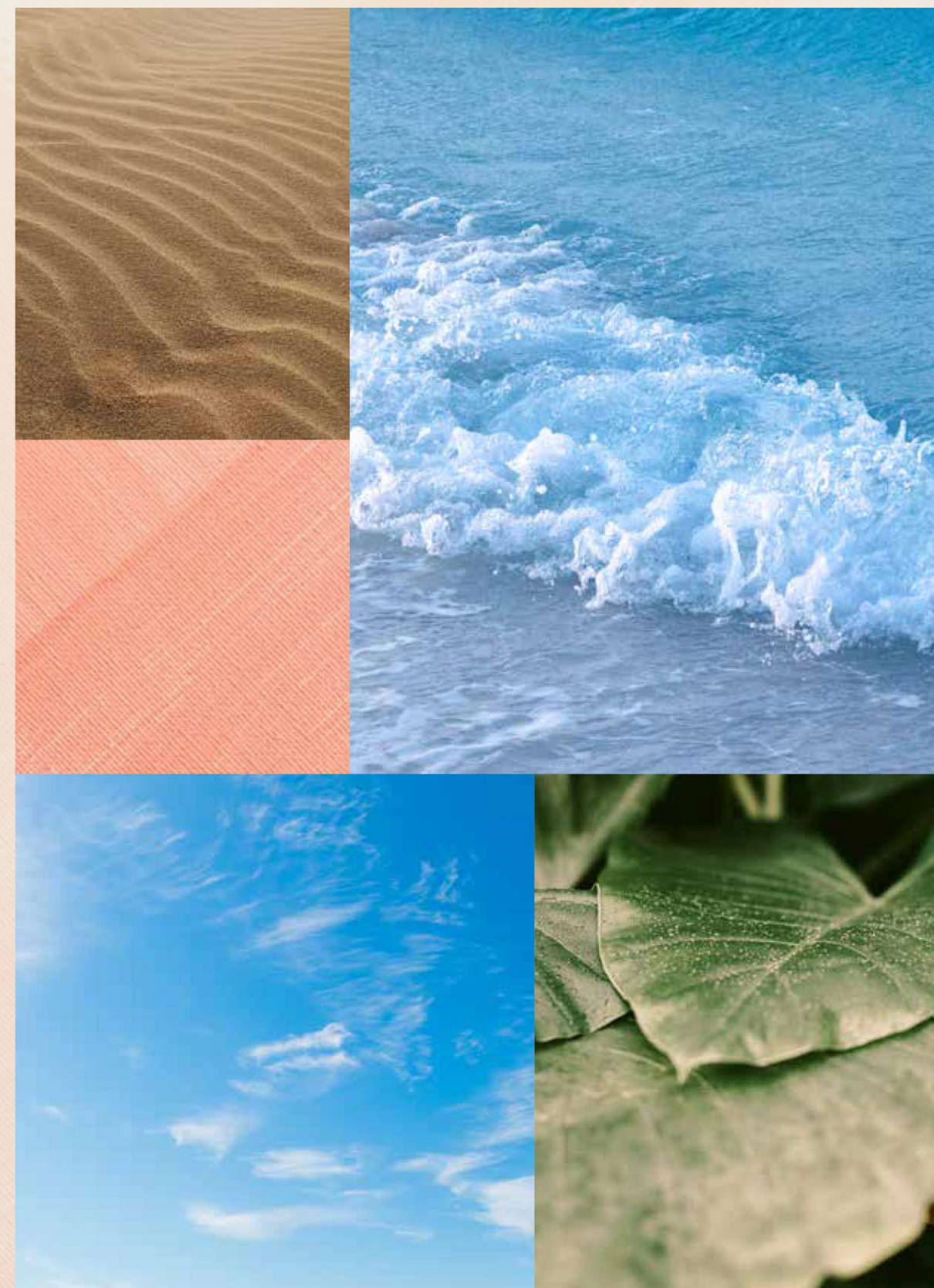
LIVE IN HARMONY WITH NATURE, BETWEEN THE CITY AND THE SKY.

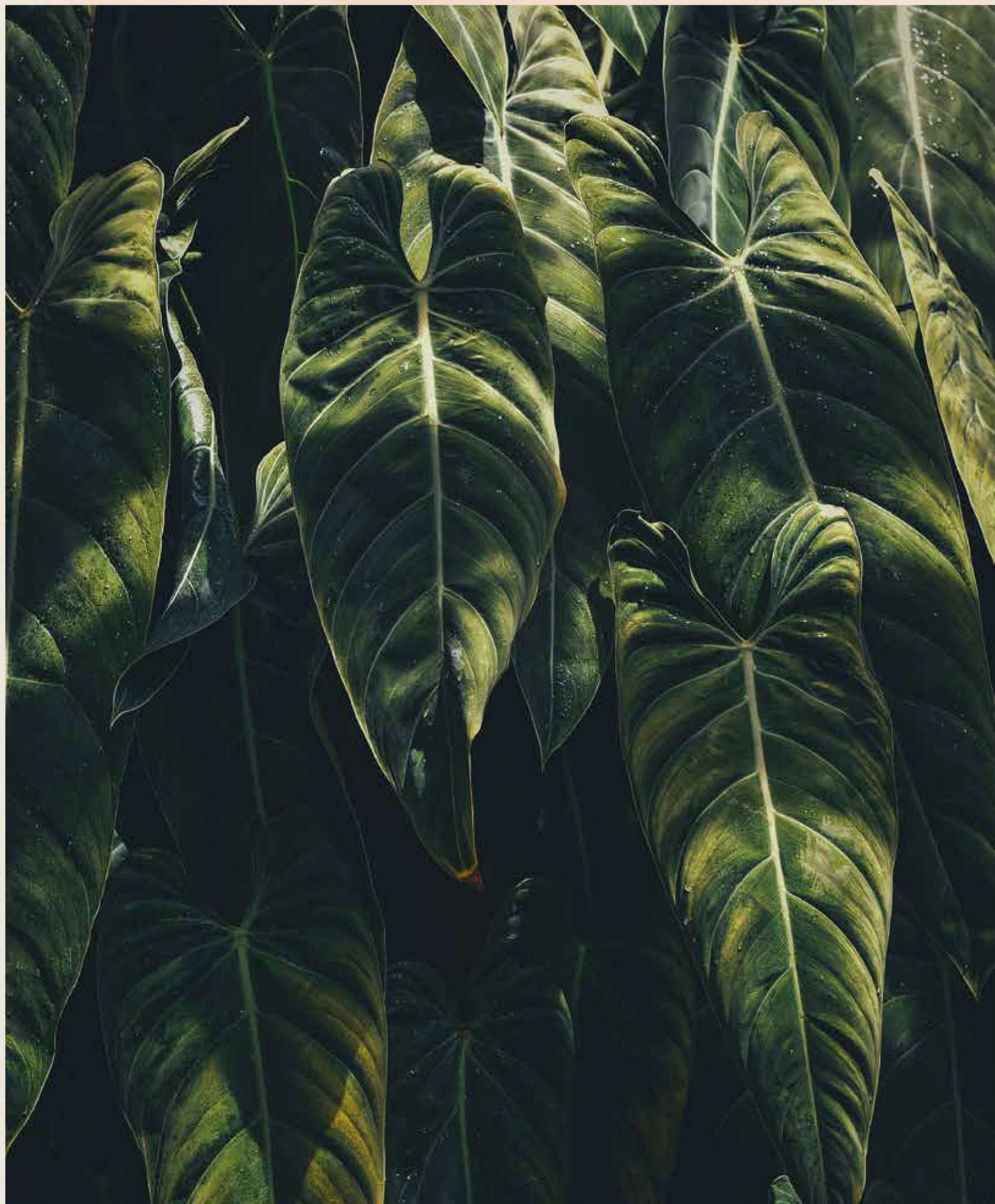
Palm Jebel Ali rises from the sea to form a perfect paradisiacal archipelago. This masterpiece of luxury living offers a unique perspective on Dubai's skyline from a haven of tranquillity, and boasts the longest coastline of any destination in Dubai. Palm Jebel Ali is located minutes away from the energy of the city, with excellent connectivity via Sheikh Zayed Road (E11) to other Dubai destinations or to Abu Dhabi. Palm Jebel Ali will be the feature destination of Dubai's rapidly developing southern urban centre. Spectacular properties and five-star amenities are skilfully woven together to create a highly desirable residential destination.





THE
FRONDS
CORAL COLLECTION





— FLOURISHING GREEN FRONDS

AN ICONIC NEIGHBOURHOOD

THE PERFECT BLEND OF ISLAND
AND URBAN LIVING.

Each exclusive frond forms its own thoughtfully planned private neighbourhood. Discover elegant streets painted in varying shades of green. Lush, layered flora merges with carefully curated foliage to create a perfectly harmonious residential landscape directly on the beachfront.

The frond community focuses on offering an active lifestyle, with wide walkable streets allowing pedestrians and bikers to access the beach through pocketed parks. The frond streetscape offers an intensely lush and fragrant landscape providing adequate shade coverage, with designated tree corridors alternating with street lighting and an additional layer of planting buffer to complete this idyllic verdant oasis.



Savour the refined, tropical atmosphere that surrounds you as you step out from your serene garden onto the sandy beach that lies at your doorstep. Enjoy the calming sounds of the waves and the openness of the sea for moments of pure relaxation.

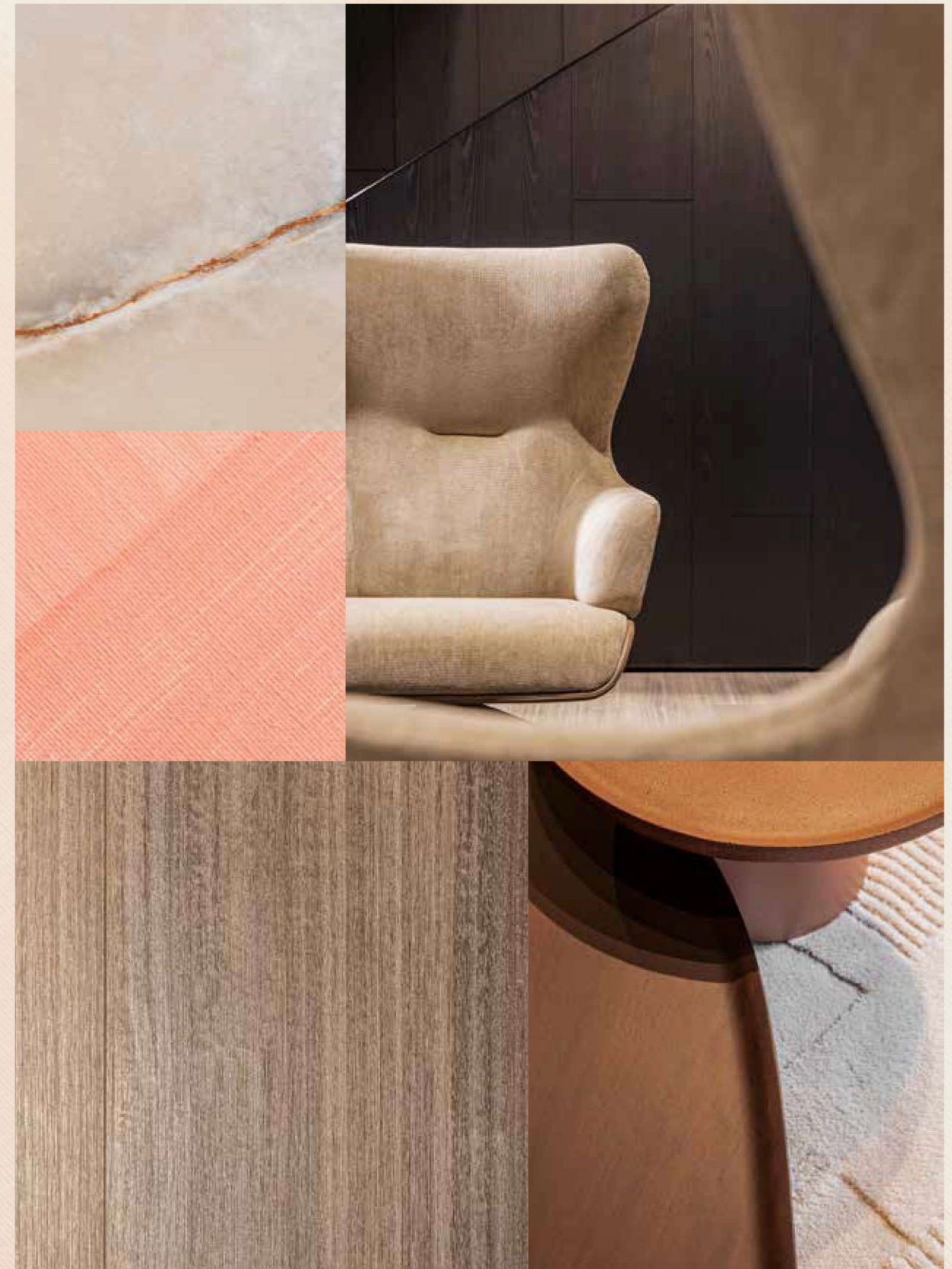


INTRODUCING THE CORAL COLLECTION

CRAFTED WITH CARE

STRIKING ELEGANCE MEETS DARING DESIGN.
DISCOVER THE SENSATIONAL **CORAL**
COLLECTION.

A collection created with refined care and deep
passion. Each unique in its own way, a Coral Villa is
the ultimate statement home.

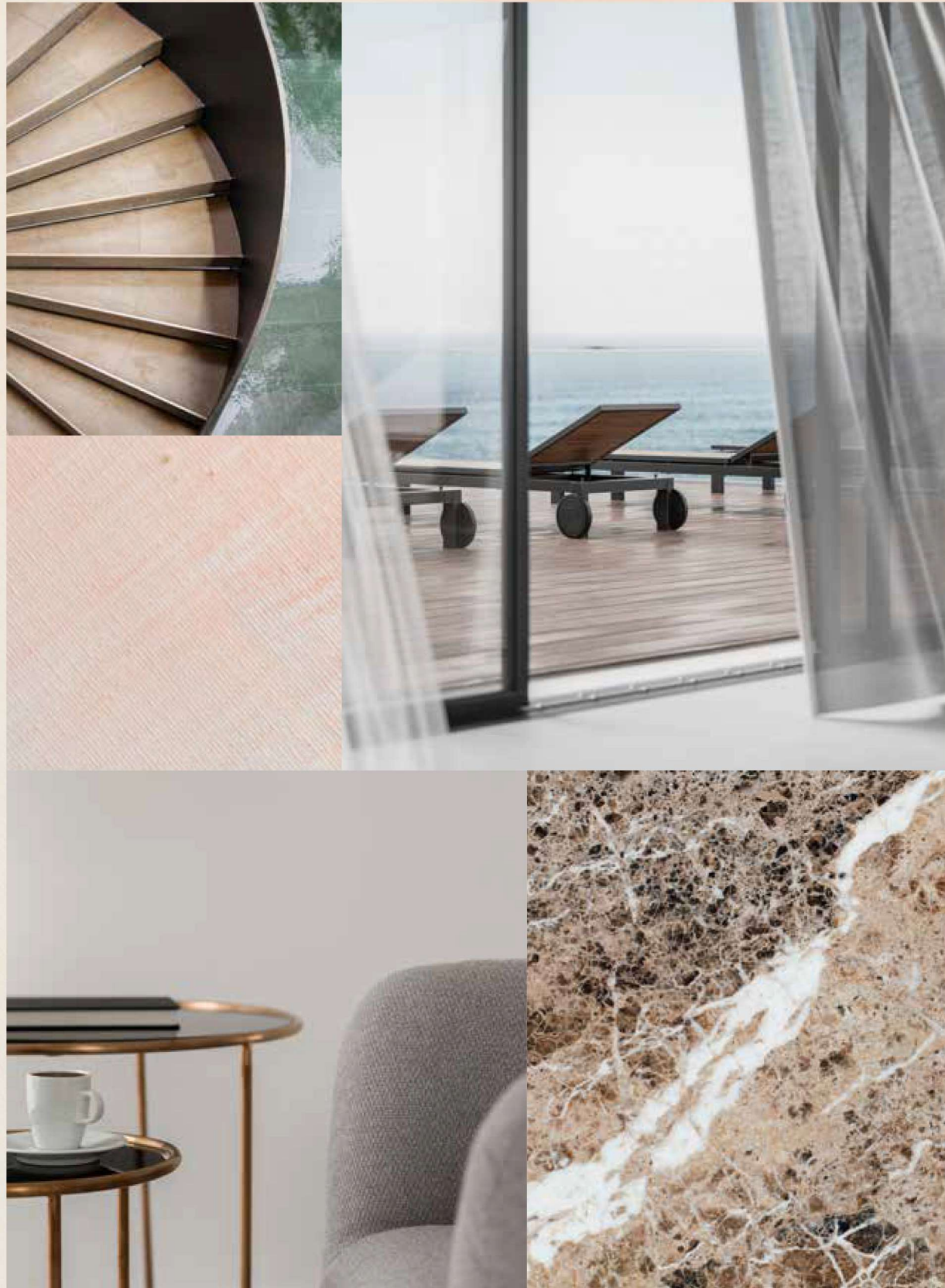


First-class design, a supreme waterfront location, and the peace and serenity of an exclusive, private neighbourhood.

HOMES DESIGNED WITH **UNPARALLELED** STYLE.

The Coral Collection is for those who appreciate distinctive architectural design, sophisticated style, and luxurious materials. With a wide variety of layouts, there is an ideal home to suit every lifestyle. The villas are designed so that each one offers a unique character, experience and environment, with a focus on exclusivity. Each property holds a timeless appeal, while embracing a unique contemporary design and providing seamless indoor-outdoor connectivity to savour the beachfront setting.

FIRST-CLASS DESIGN / LUXURIOUS MATERIALS / WATERFRONT LOCATION

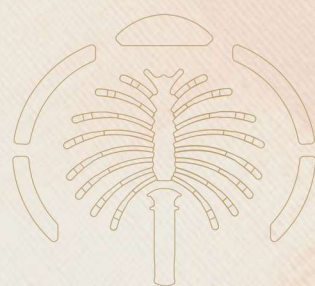


LIVE IN A MASTERPIECE

OWN A PIECE OF

HISTORY

2



Eight Unique Coral Villas

The Coral Collection
Villa Terracotta

— p.28
— p.34

THE CORAL COLLECTION

S U B L I M E B E A C H F R O N T R E S I D E N C E S

THE CONTEMPORARY **COMPOSITION** OF EACH STATEMENT VILLA HAS BEEN METICULOUSLY DESIGNED.

In a Coral Villa, everything is lit up by passion and perfection. Imagine living in a space where everything is seamlessly connected in one place – the sea, the sky, the gorgeous beachfront, and every design detail. Feel the energy, the prosperity of life flowing endlessly through the outdoors and indoors.

Seven outstanding ensuite bedrooms and a huge variety of relaxing spaces for an incomparable lifestyle, where you can be inspired intellectually and emotionally in every single moment. The Coral collection provides, in addition to the family room, a formal living space on the ground floor. A double maid's room is offered, as well as provision for a guard's house. Each space is designed to suit a variety of lifestyles and to offer comfort and service with ease to all residents.



Each residence, nestled in this sheltered neighbourhood, enjoys **direct beach connectivity** and has been carefully crafted to offer maximum flexibility, comfort, and privacy to residents.

TRUE LUXURY LIVING REFLECTS YOUR OWN
DESIRES WITH SIMPLICITY AND STYLE.

Have you ever seen the light coming from a kaleidoscope? Colours, shapes, shades: a perfect vision that amazes you at a glance. A Coral Villa gives the same impression: each property is truly one of a kind. Every villa sparkles in a unique light and inspires the people who live inside in a distinctive and particular way. Each villa is bespoke to marvel at and realise individual needs and dreams. We build happiness and prosperity for all our residents.





BEACH CONNECTIVITY / COMFORT / PRIVACY



VILLA

TERRACOTTA

Seven-Bedroom Property

This unique home has a distinctively contemporary look and feel. With bold design choices that include an enclosed showpiece car gallery, this is the ultimate home for luxury enthusiasts.

VILLA TERRACOTTA

A PALATIAL RESIDENCE

ICONIC DESIGN AND DRAMATIC DETAILS
ENSURE AN AWE-INSPIRING RESULT.

Bright, vibrant, and distinctive – this villa is as striking as the astonishingly rich and complex, warm and inviting red-hot shade of terracotta. Artistic, attractive, and impressive, this home certainly demands attention whilst being perfectly in tune with its natural setting. This is a home designed for contemporary connoisseurs who live life in the fast lane. As you explore each majestic space and marvel at infinite views over the ever-changing seascape, feel a deep sense of peace and calm as you relax in the grandeur of this magnificent home surrounded by nature.



This grandiose villa is the epitome of sophistication. Spend long, leisurely evenings on the wondrous waterfront terrace, enthralled by breathtaking views over the ever-enchanting sea and sky.





The truly striking façade gracefully balances open and closed spaces.

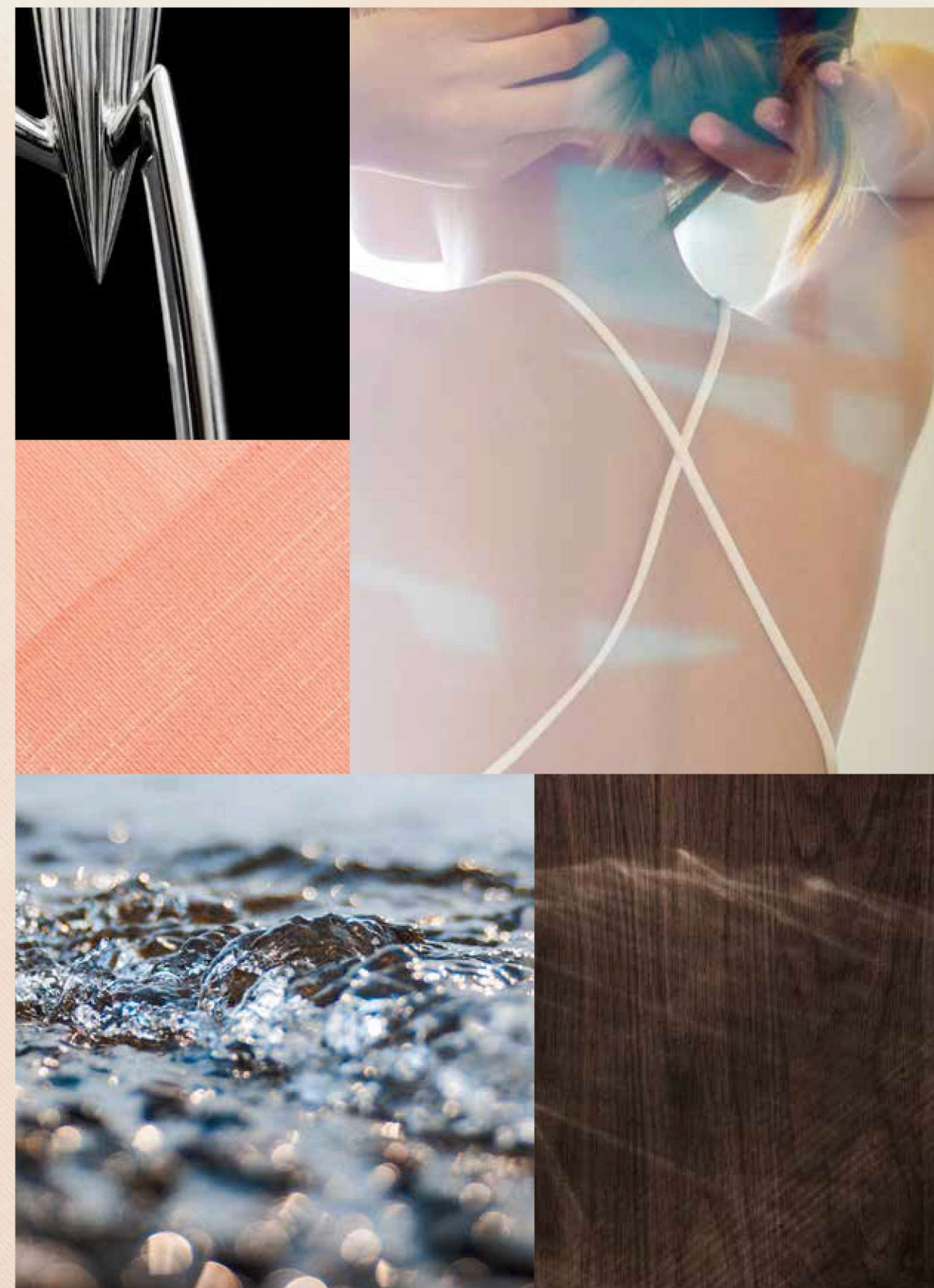
The central glass panels, with vertical detailing, invite an abundance of natural light inside. Enjoy an uplifting experience each time you return home.



The dramatic design of this **spectacular** home will delight you and your guests every single day.

MAKE A LASTING IMPRESSION.

This home is unlike any other in the collection. It is ideal for those who seek a stylish and unique residence with statement features throughout. Perfect for those with a penchant for entertaining, you can be assured your guests will be amazed by the immaculately designed spaces that make a lasting impression. Beach-facing, double-height formal living space will delight all occupants, whether having a quiet night in or hosting a glittering get-together; this home is ideal for every occasion.



The sweeping floor-to-ceiling windows infuse each space with the natural elements – dazzling sunlight, refreshing sea air, and the fragrance of flourishing greenery are welcomed into the expansive living space.





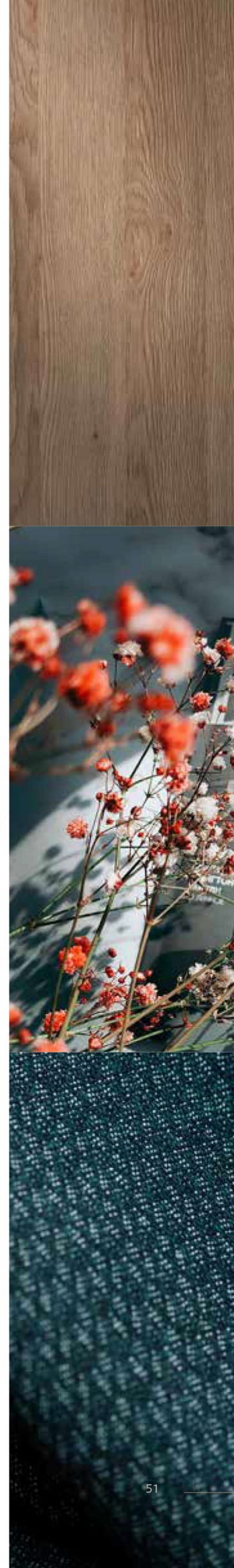
Retreat to the serene master suite that will
become your everyday sanctuary.

Allow the extensive views of the blue sea to fill you with a deep sense of calm as you admire the beauty of nature.



Enjoy comfortable, private lounge areas that are decorated with fine finishes and meticulous detailing.

The calming sounds and sights of the dynamic sea view fill this space with tranquil energy.



The striking roof terrace, located on the second floor, is the ideal setting for a spacious, at-home gym. Practise yoga or train in the brilliant and warm sunshine as you focus on your well-being.



This grand villa is ideal for those who delight in **entertaining** but also enjoy peaceful moments surrounded by nature.

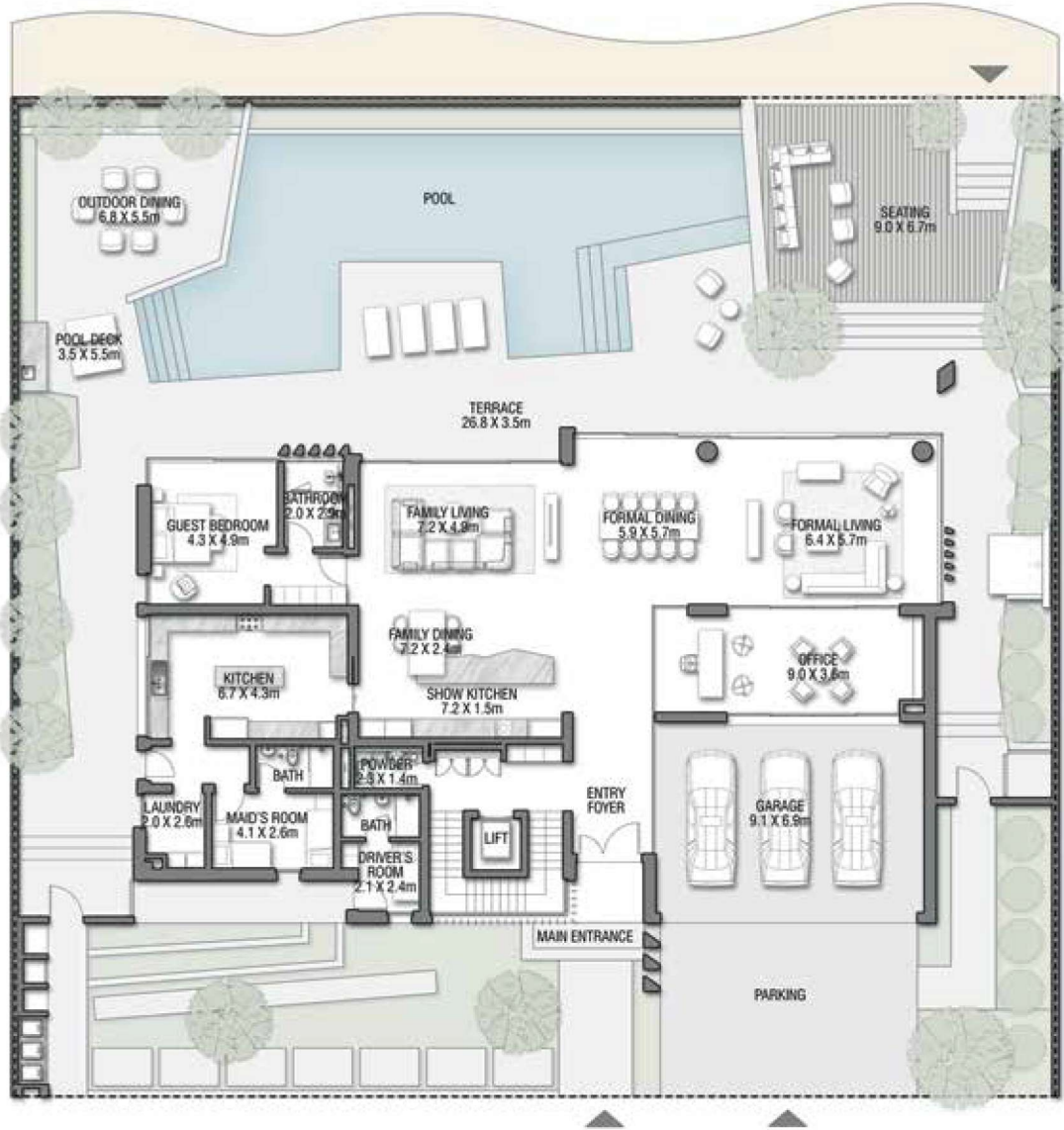
SPACE FOR WORK, WELLNESS AND LEISURE.

This home has been designed to provide sleek and stylish spaces to accommodate every aspect of your exhilarating lifestyle: from working at home and meeting clients to hosting exclusive dinner parties and memorable events to rest and self-care.

The presence of natural elements, such as warm sunshine, the sparkling sea, and lush greenery, add a new dimension to this vibrant design, creating a blissful environment from morning until night.



The unique master bathrooms in this remarkable property incorporate lush outdoor space, creating a refreshing atmosphere that inspires relaxation.



GROUND FLOOR



SECOND FLOOR



FIRST FLOOR

VILLA

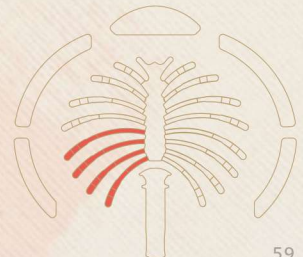
TERRACOTTA

Coral Villas Collection

G + 2

7 BEDROOMS + FORMAL AND FAMILY LOUNGES
+ SHOW GARAGE + OFFICE + ROOF LOUNGE
AND TERRACE

FLOOR TYPE	SQ. M.	SQ. FT.
Ground Floor	351.58	3,784.38
Balcony / Terrace / Porch-GF	0.0	0.0
First Floor Area	365.54	3,934.64
Balcony / Terrace - First Floor	73.21	788.03
Second Floor Area	180.54	1,943.32
Balcony / Terrace - Second Floor	92.52	995.88
Garage - Covered	64.50	694.27
TOTAL BUILT-UP AREA	1,127.89	12,140.51
Garage with Pergola	0.0	0.0
TOTAL AREA	1,127.89	12,140.51

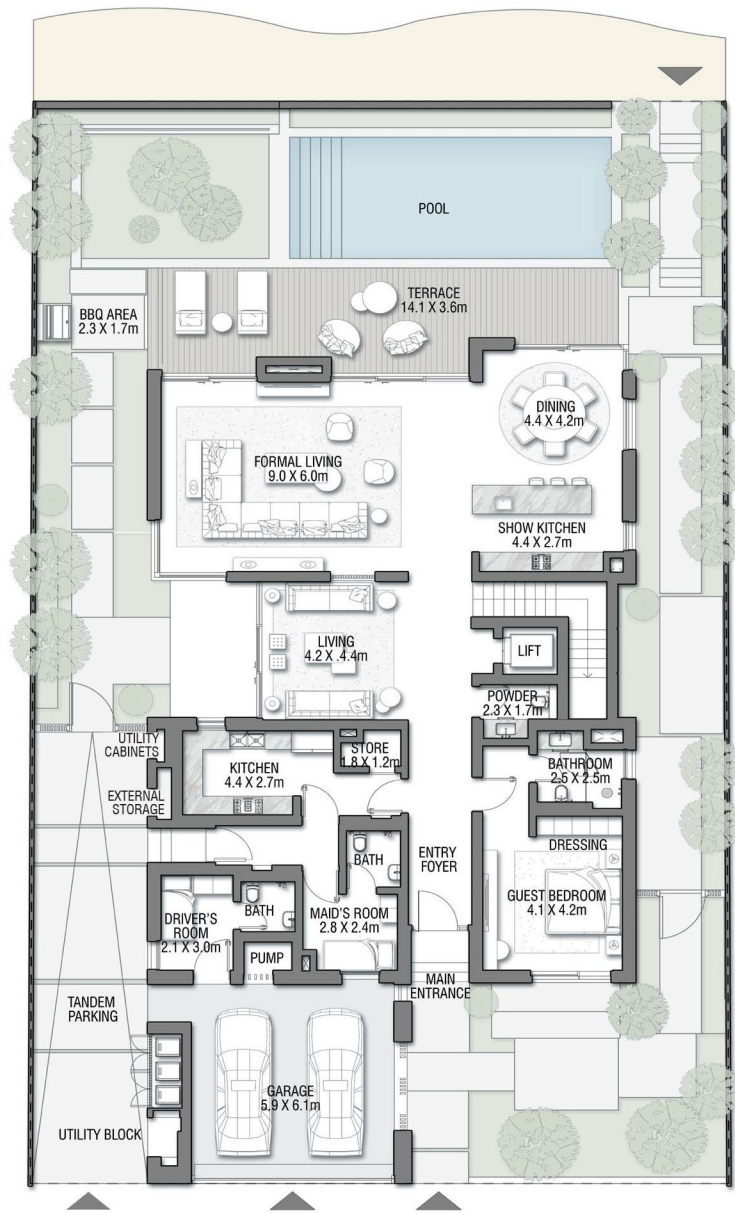


Numbers, square footage and floor plans are approximate. Final dimensions, square footage and floor plans may vary and are subject to change without notice. The developer reserves the right to make revisions. Built-Up Area is measured in accordance with Dubai Land Department standards. Plans, artistic renderings, landscaping and images are for illustrative purposes only and are subject to change without notice. Landscape shown is indicative and not provided by the developer. Pool layout and configuration shown on floor plans are for general illustrative purposes only and are not provided by the developer. The Bespoke Edition Option offered to the buyer at additional price will include a standard pool offering.

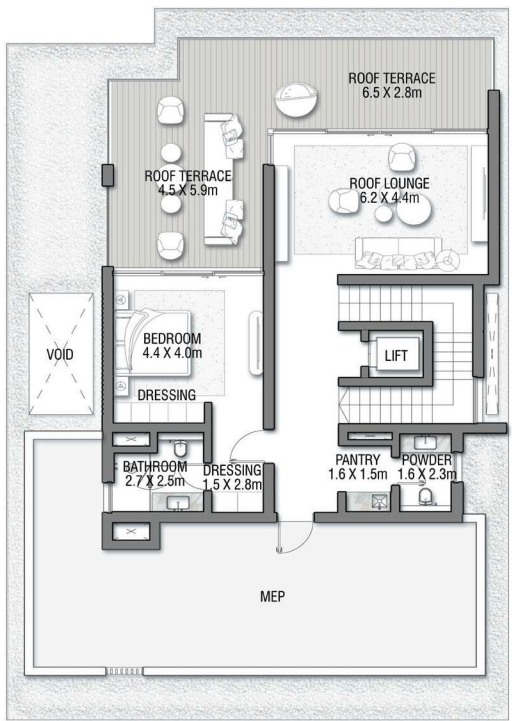
INFO@NAKHEEL.COM
800 NAKHEEL

THE CORAL COLLECTION

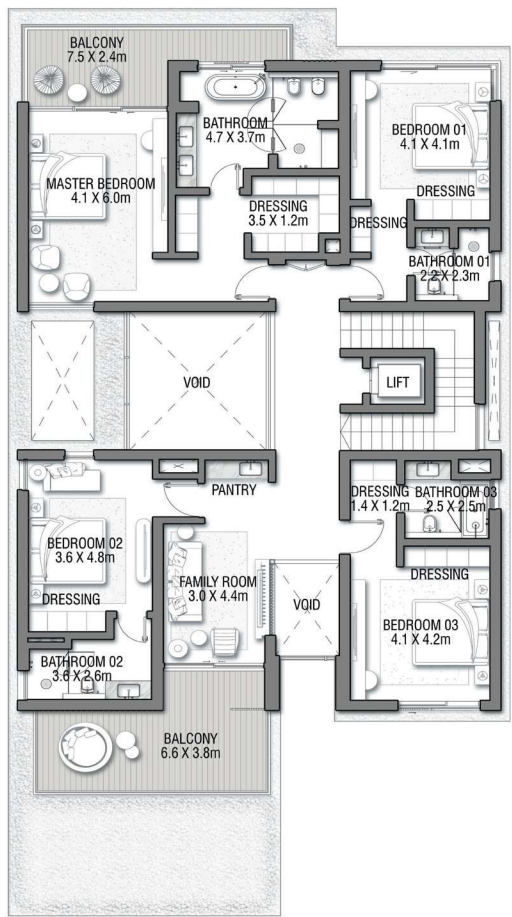
**PALM
JEBEL ALI
NAKHEEL**



GROUND FLOOR



SECOND FLOOR



FIRST FLOOR

VILLA

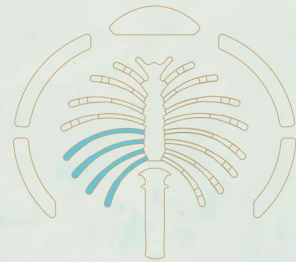
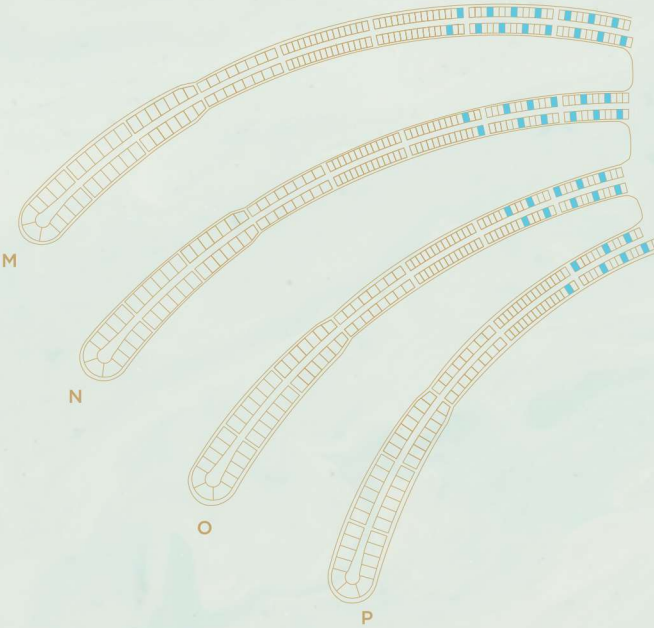
ACQUAMARINA

Beach Villas Collection

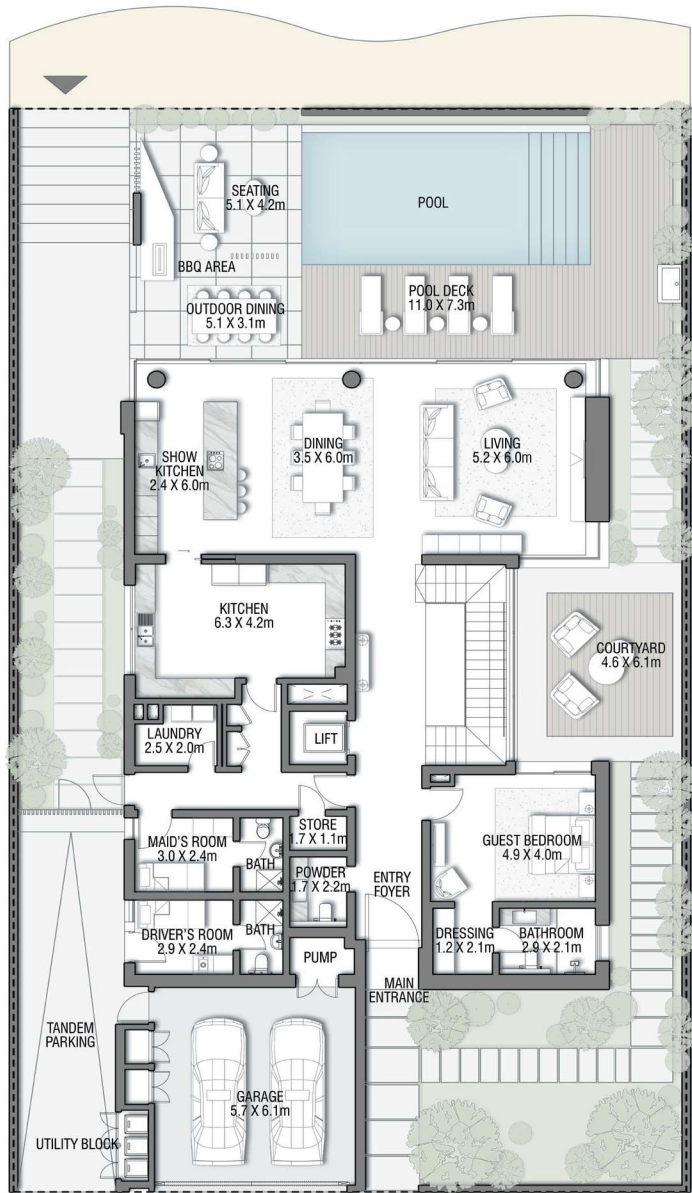
G + 2

6 BEDROOMS + FORMAL AND FAMILY LOUNGES
+ ROOF LOUNGE AND TERRACE

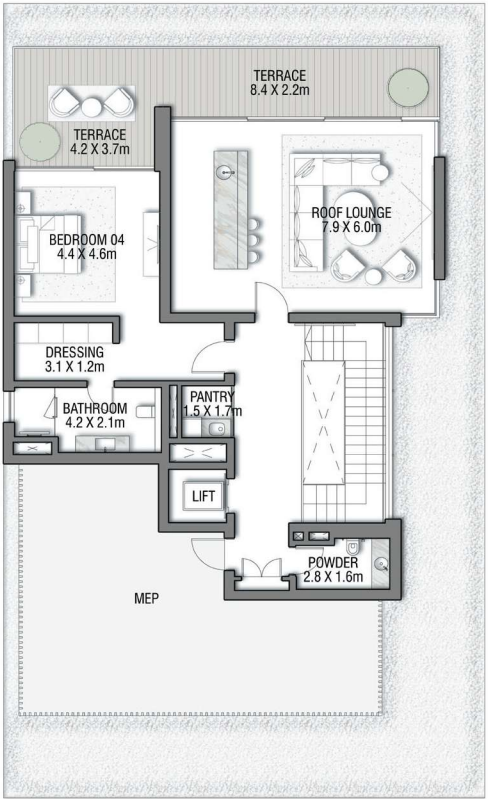
FLOOR TYPE	SQ. M.	SQ. FT.
Ground Floor	245.30	2,640.39
Balcony / Terrace / Porch-GF	4.95	53.28
First Floor Area	229.40	2,469.24
Balcony / Terrace - First Floor	38.07	409.78
Second Floor Area	114.00	1,227.09
Balcony / Terrace - Second Floor	51.59	555.31
Garage - Covered	48.37	520.65
TOTAL BUILT-UP AREA	731.68	7,875.74
Garage with Pergola	0.0	0.0
TOTAL AREA	731.68	7,875.74



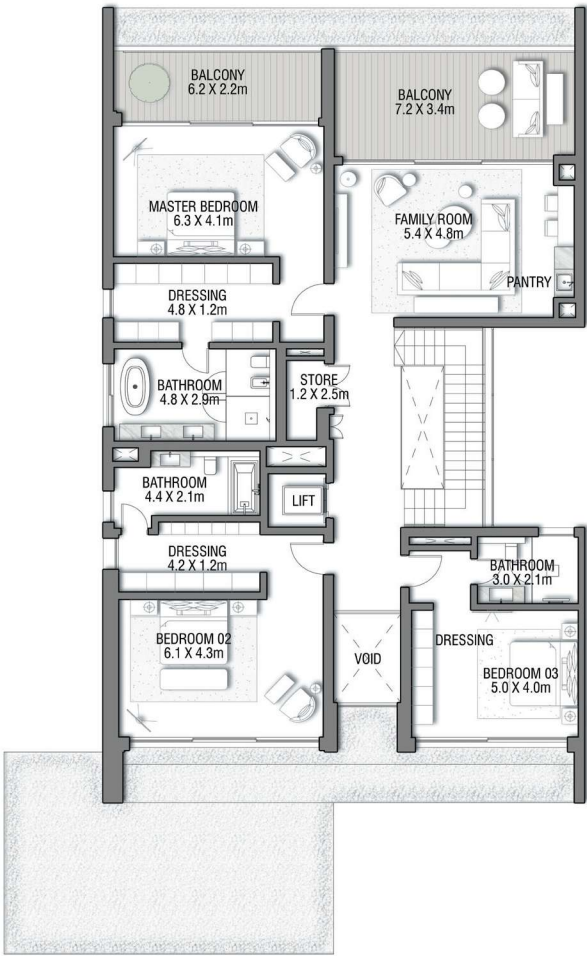
Numbers, square footage and floor plans are approximate. Final dimensions, square footage and floor plans may vary and are subject to change without notice. The developer reserves the right to make revisions. Built-Up Area is measured in accordance with Dubai Land Department standards. Plans, artistic renderings, landscaping and images are for illustrative purposes only and are subject to change without notice. Landscape shown is indicative and not provided by the developer. Pool layout and configuration shown on floor plans are for general illustrative purposes only and are not provided by the developer. The Bespoke Edition Option offered to the buyer at additional price will include a standard pool offering.



GROUND FLOOR



SECOND FLOOR



FIRST FLOOR

VILLA

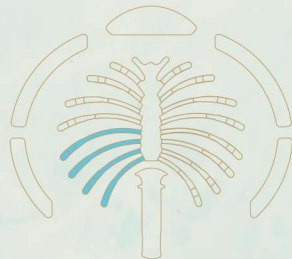
A Z U R E B L U E

Beach Villas Collection

G + 2

5 BEDROOMS + FAMILY ROOM
+ ROOF LOUNGE AND TERRACE

FLOOR TYPE	SQ. M.	SQ. FT.
Ground Floor	258.14	2,778.60
Balcony / Terrace / Porch-GF	2.07	22.28
First Floor Area	246.67	2,655.13
Balcony / Terrace – First Floor	39.94	429.91
Second Floor Area	153.55	1,652.80
Balcony / Terrace – Second Floor	34.60	372.43
Garage – Covered	48.61	523.23
TOTAL BUILT-UP AREA	783.58	8,434.38
Garage with Pergola	0.0	0.0
TOTAL AREA	783.58	8,434.38

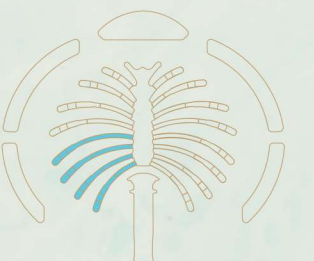




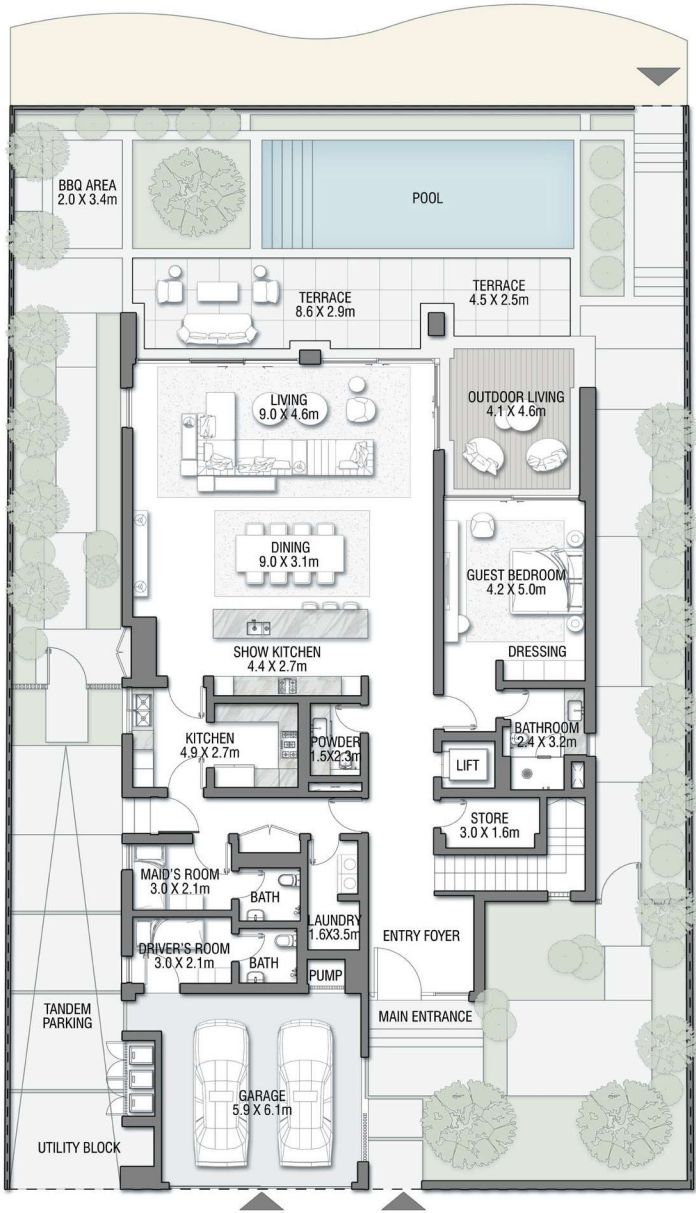
BLUE
HORIZON

G + 2

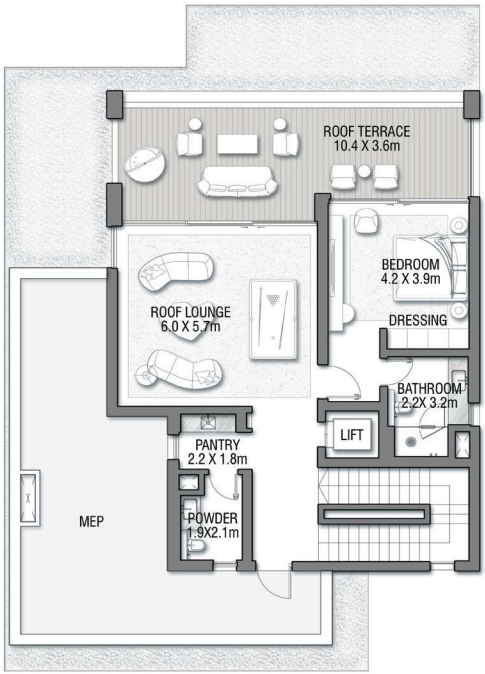
FLOOR TYPE	SQ. M.	SQ. FT.
Ground Floor	206.74	2,225.33
Balcony / Terrace / Porch – GF	4.08	43.92
First Floor Area	244.64	2,633.28
Balcony / Terrace – First Floor	17.67	190.20
Second Floor Area	116.18	1,250.55
Balcony / Terrace – Second Floor	50.08	539.06
Garage – Covered	40.29	433.68
TOTAL BUILT-UP AREA	679.68	7,316.01
Garage with Pergola	0.0	0.0
TOTAL AREA	679.68	7,316.01



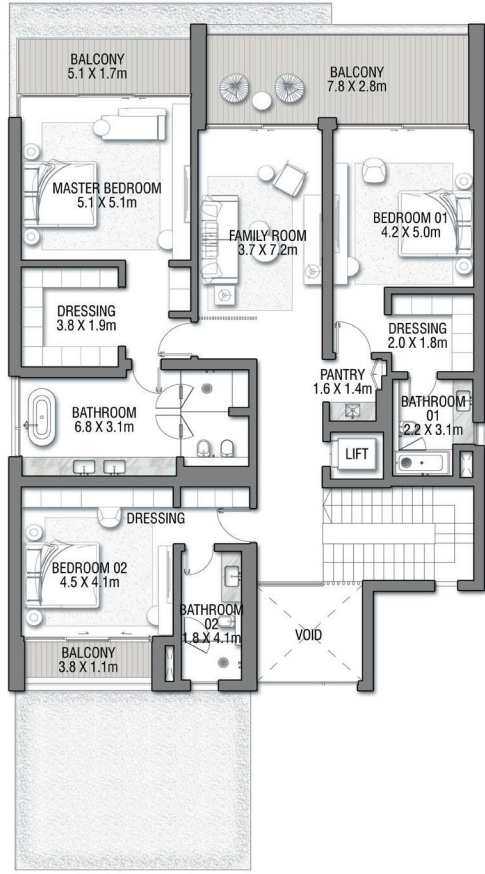
Numbers, square footage and floor plans are approximate. Final dimensions, square footage and floor plans may vary and are subject to change without notice. The developer reserves the right to make revisions. Built-Up Area is measured in accordance with Dubai Land Department standards. Plans, artistic renderings, landscaping and images are for illustrative purposes only and are subject to change without notice. Landscape shown is indicative and not provided by the developer. Pool layout and configuration shown on floor plans are for general illustrative purposes only and are not provided by the developer. The Bespoke Edition Option offered to the buyer at additional price will include a standard pool offering.



GROUND FLOOR



SECOND FLOOR



FIRST FLOOR

VILLA

INDIGO OCEAN

Beach Villas Collection

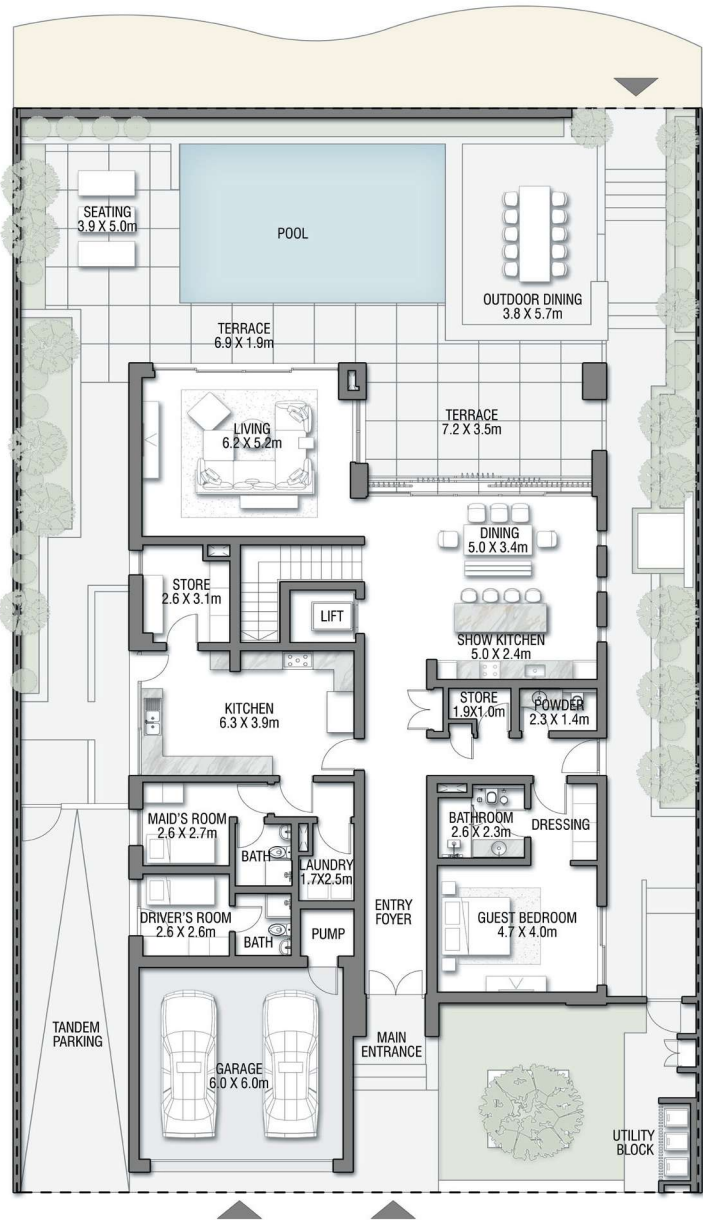
G + 2

5 BEDROOMS + FAMILY ROOM
+ ROOF LOUNGE AND TERRACE

FLOOR TYPE	SQ. M.	SQ. FT.
Ground Floor	247.74	2,666.65
Balcony / Terrace / Porch - GF	16.23	174.70
First Floor Area	227.13	2,444.81
Balcony / Terrace - First Floor	43.22	465.22
Second Floor Area	114.85	1,236.24
Balcony / Terrace - Second Floor	37.33	401.82
Garage - Covered	45.82	493.20
TOTAL BUILT-UP AREA	732.32	7,882.63
Garage with Pergola	0.0	0.0
TOTAL AREA	732.32	7,882.63



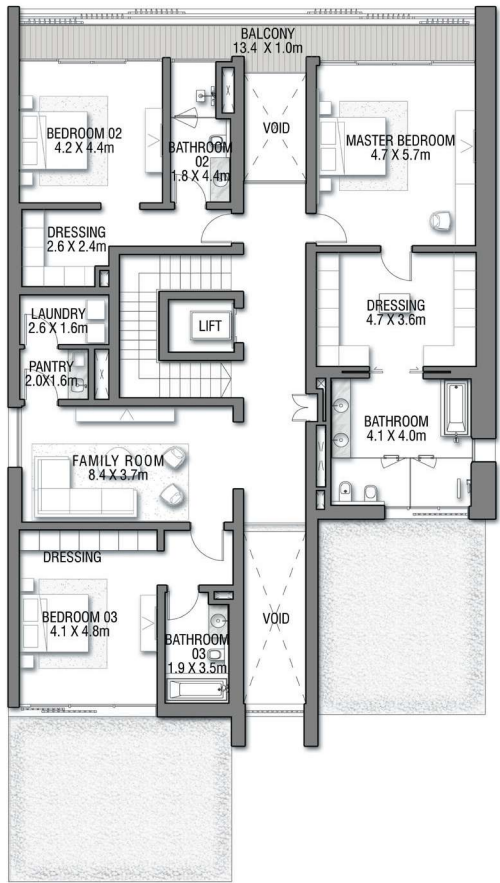
Numbers, square footage and floor plans are approximate. Final dimensions, square footage and floor plans may vary and are subject to change without notice. The developer reserves the right to make revisions. Built-Up Area is measured in accordance with Dubai Land Department standards. Plans, artistic renderings, landscaping and images are for illustrative purposes only and are subject to change without notice. Landscape shown is indicative and not provided by the developer. Pool layout and configuration shown on floor plans are for general illustrative purposes only and are not provided by the developer. The Bespoke Edition Option offered to the buyer at additional price will include a standard pool offering.



GROUND FLOOR



SECOND FLOOR



FIRST FLOOR

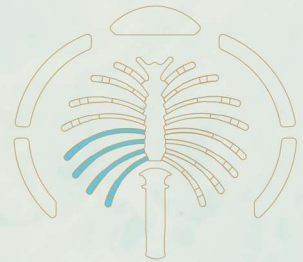
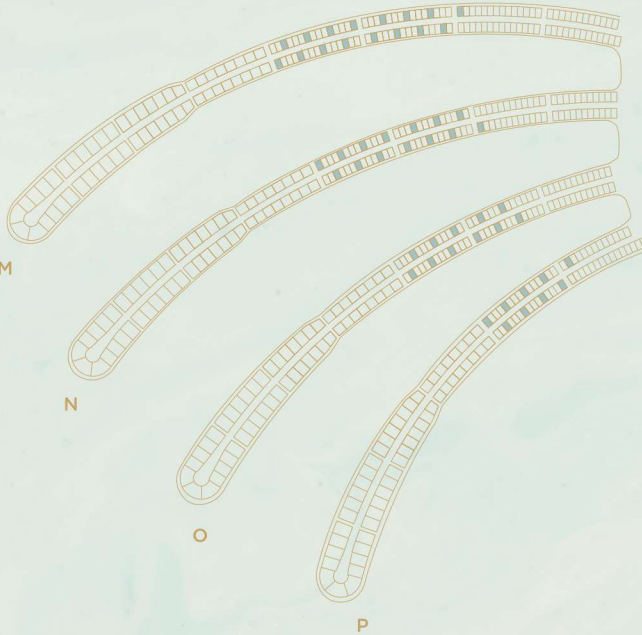
VILLA
MEDITERRANEAN

Beach Villas Collection

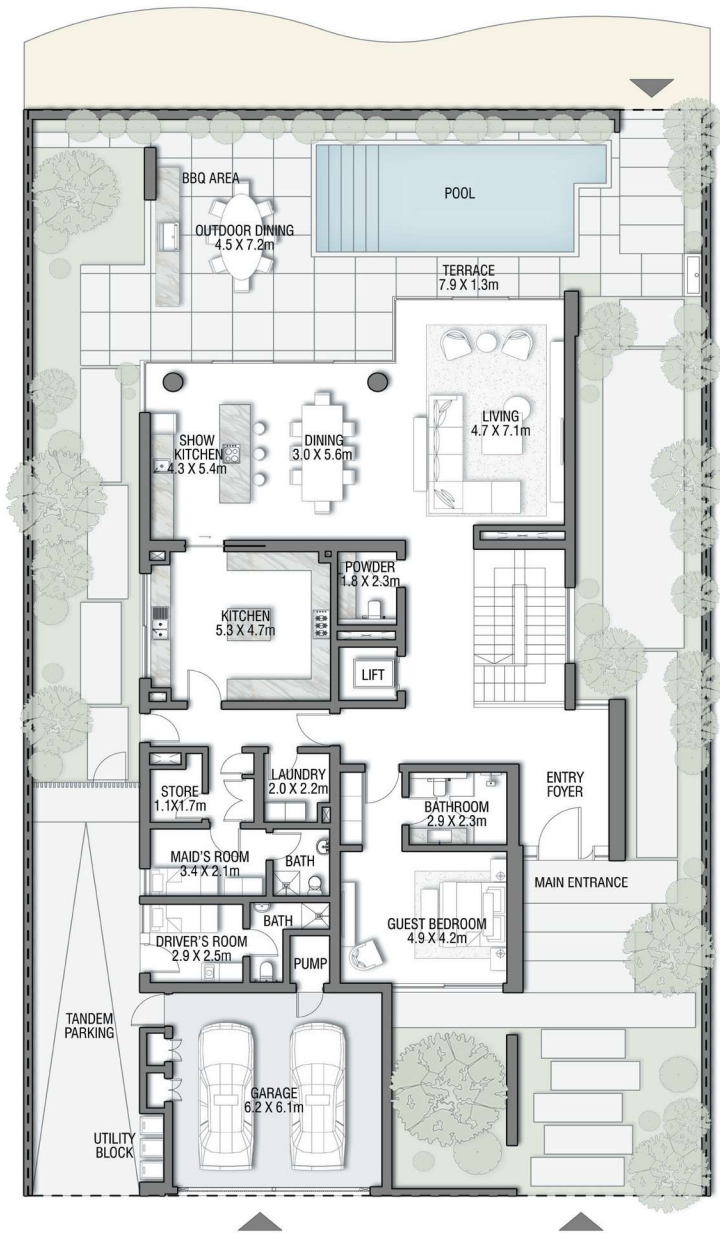
G + 2

5 BEDROOMS + FAMILY ROOM
+ ROOF LOUNGE AND TERRACE

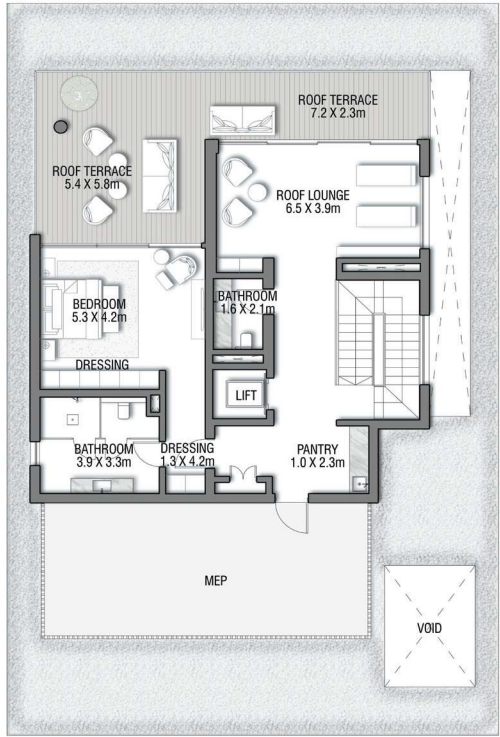
FLOOR TYPE	SQ. M.	SQ. FT.
Ground Floor	239.47	2,577.63
Balcony / Terrace / Porch - GF	0.0	0.0
First Floor Area	237.56	2,557.07
Balcony / Terrace - First Floor	18.08	194.61
Second Floor Area	136.07	1,464.65
Balcony / Terrace - Second Floor	82.83	891.57
Garage - Covered	44.60	480.07
TOTAL BUILT-UP AREA	758.61	8,165.61
Garage with Pergola	0.0	0.0
TOTAL AREA	758.61	8,165.61



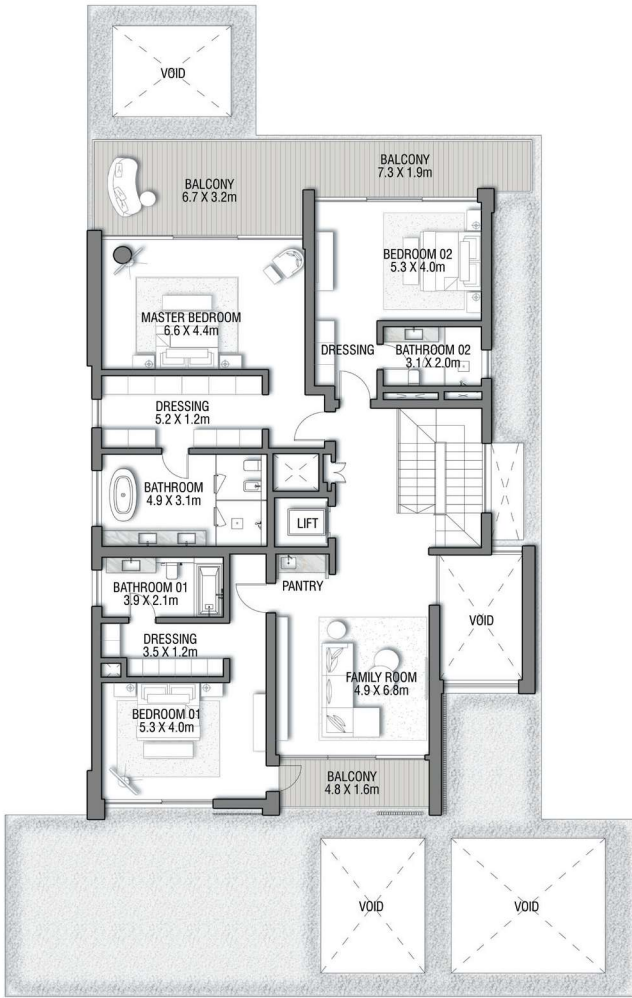
Numbers, square footage and floor plans are approximate. Final dimensions, square footage and floor plans may vary and are subject to change without notice. The developer reserves the right to make revisions. Built-Up Area is measured in accordance with Dubai Land Department standards. Plans, artistic renderings, landscaping and images are for illustrative purposes only and are subject to change without notice. Landscape shown is indicative and not provided by the developer. Pool layout and configuration shown on floor plans are for general illustrative purposes only and are not provided by the developer. The Bespoke Edition Option offered to the buyer at additional price will include a standard pool offering.



GROUND FLOOR



SECOND FLOOR



FIRST FLOOR

VILLA
PROVENCE

Beach Villas Collection

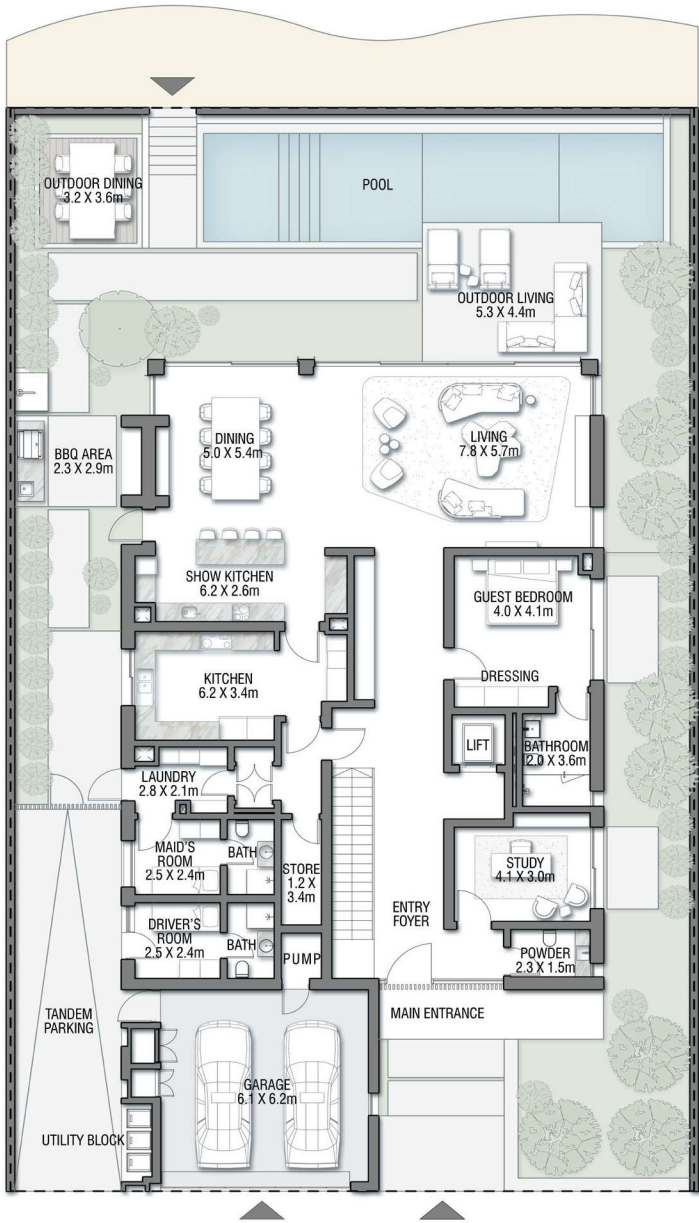
G + 2

5 BEDROOMS + FAMILY ROOM
+ ROOF LOUNGE AND TERRACE

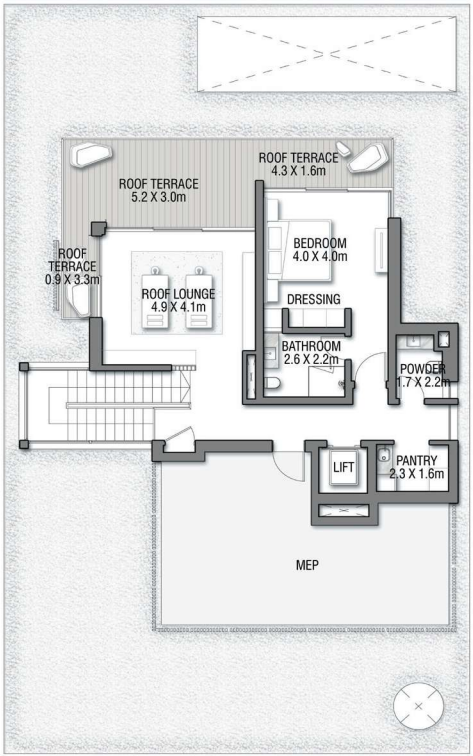
FLOOR TYPE	SQ. M.	SQ. FT.
Ground Floor	260.96	2,808.95
Balcony / Terrace / Porch - GF	0.0	0.0
First Floor Area	236.54	2,546.10
Balcony / Terrace - First Floor	44.72	481.36
Second Floor Area	133.16	1,433.32
Balcony / Terrace - Second Floor	49.58	533.67
Garage - Covered	48.17	518.50
TOTAL BUILT-UP AREA	773.13	8,321.90
Garage with Pergola	0.0	0.0
TOTAL AREA	773.13	8,321.90



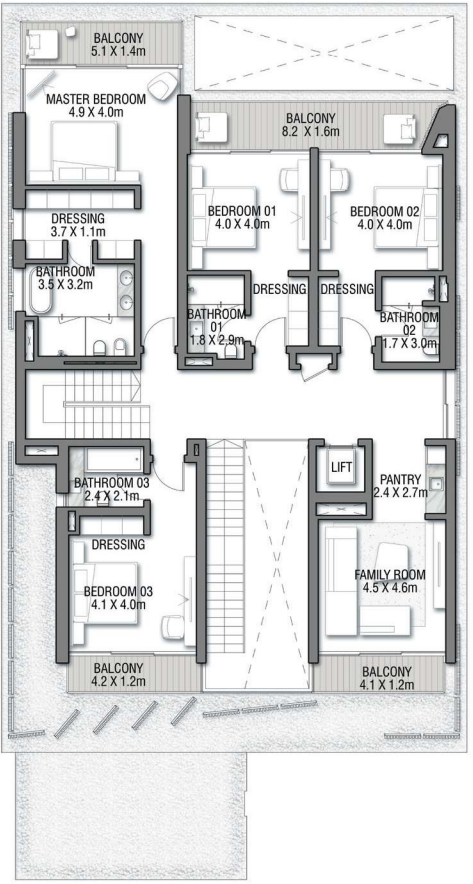
Numbers, square footage and floor plans are approximate. Final dimensions, square footage and floor plans may vary and are subject to change without notice. The developer reserves the right to make revisions. Built-Up Area is measured in accordance with Dubai Land Department standards. Plans, artistic renderings, landscaping and images are for illustrative purposes only and are subject to change without notice. Landscape shown is indicative and not provided by the developer. Pool layout and configuration shown on floor plans are for general illustrative purposes only and are not provided by the developer. The Bespoke Edition Option offered to the buyer at additional price will include a standard pool offering.



GROUND FLOOR



SECOND FLOOR



FIRST FLOOR

VILLA

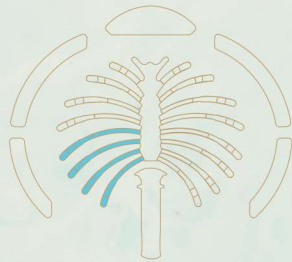
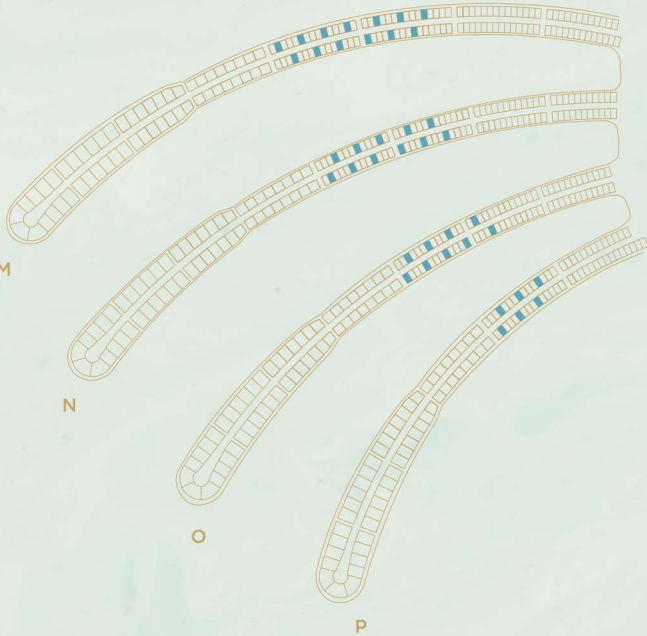
SAPPHIRE

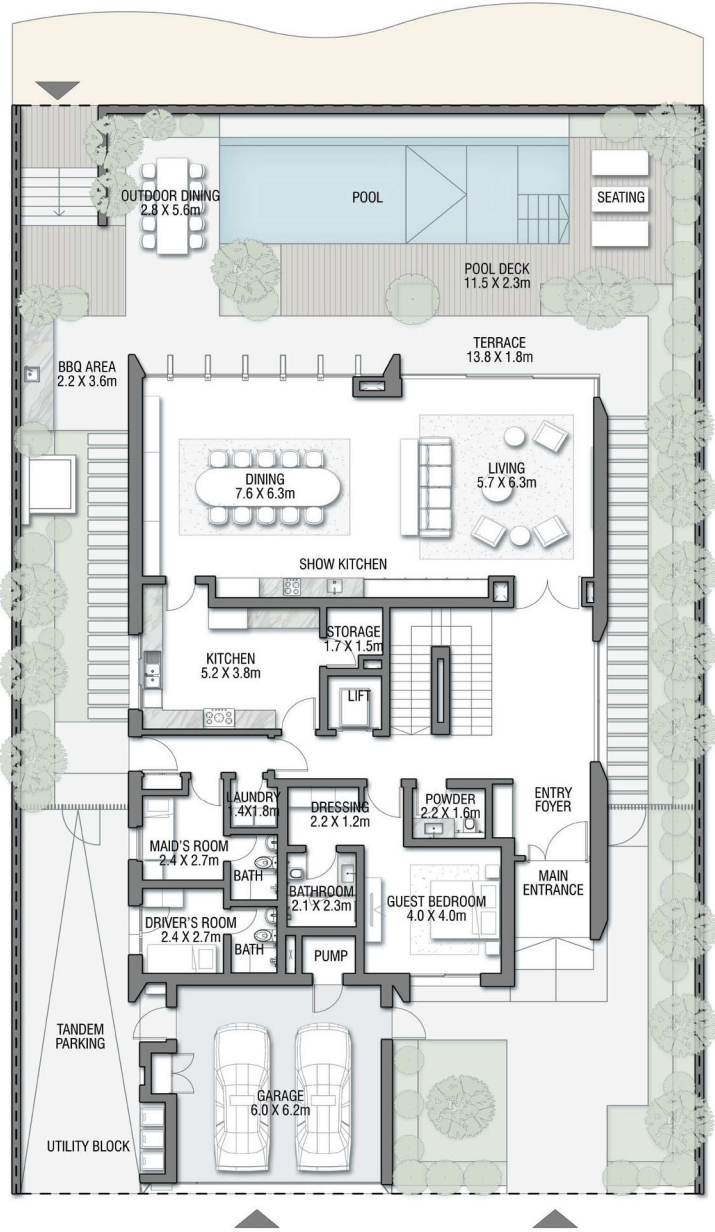
Beach Villas Collection

G + 2

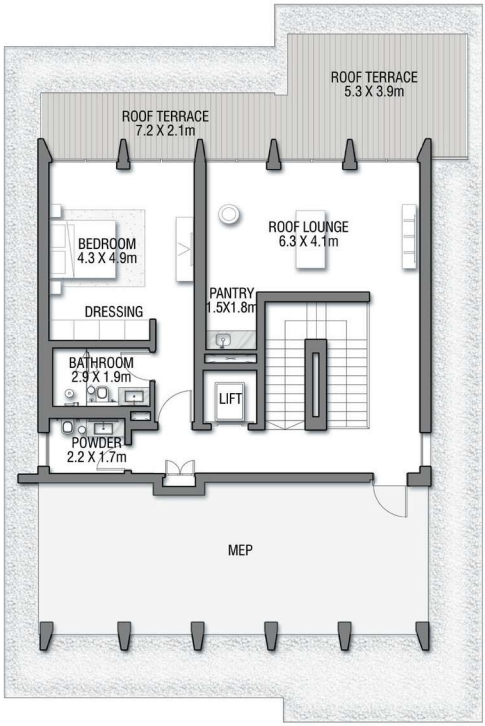
6 BEDROOMS + FAMILY ROOM + STUDY
+ ROOF LOUNGE AND TERRACE

FLOOR TYPE	SQ. M.	SQ. FT.
Ground Floor	266.94	2,873.32
Balcony / Terrace / Porch - GF	0.0	0.0
First Floor Area	233.49	2,513.27
Balcony / Terrace - First Floor	35.11	377.92
Second Floor Area	104.46	1,124.40
Balcony / Terrace - Second Floor	29.63	318.93
Garage - Covered	48.29	519.79
TOTAL BUILT-UP AREA	717.92	7,727.63
Garage with Pergola	0.0	0.0
TOTAL AREA	717.92	7,727.63

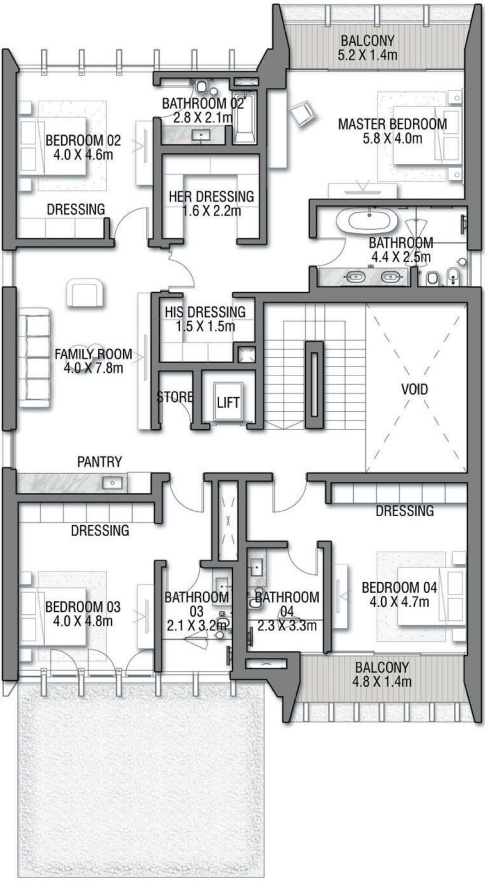




GROUND FLOOR



SECOND FLOOR



FIRST FLOOR

VILLA

TROPICAL MIST

Beach Villas Collection

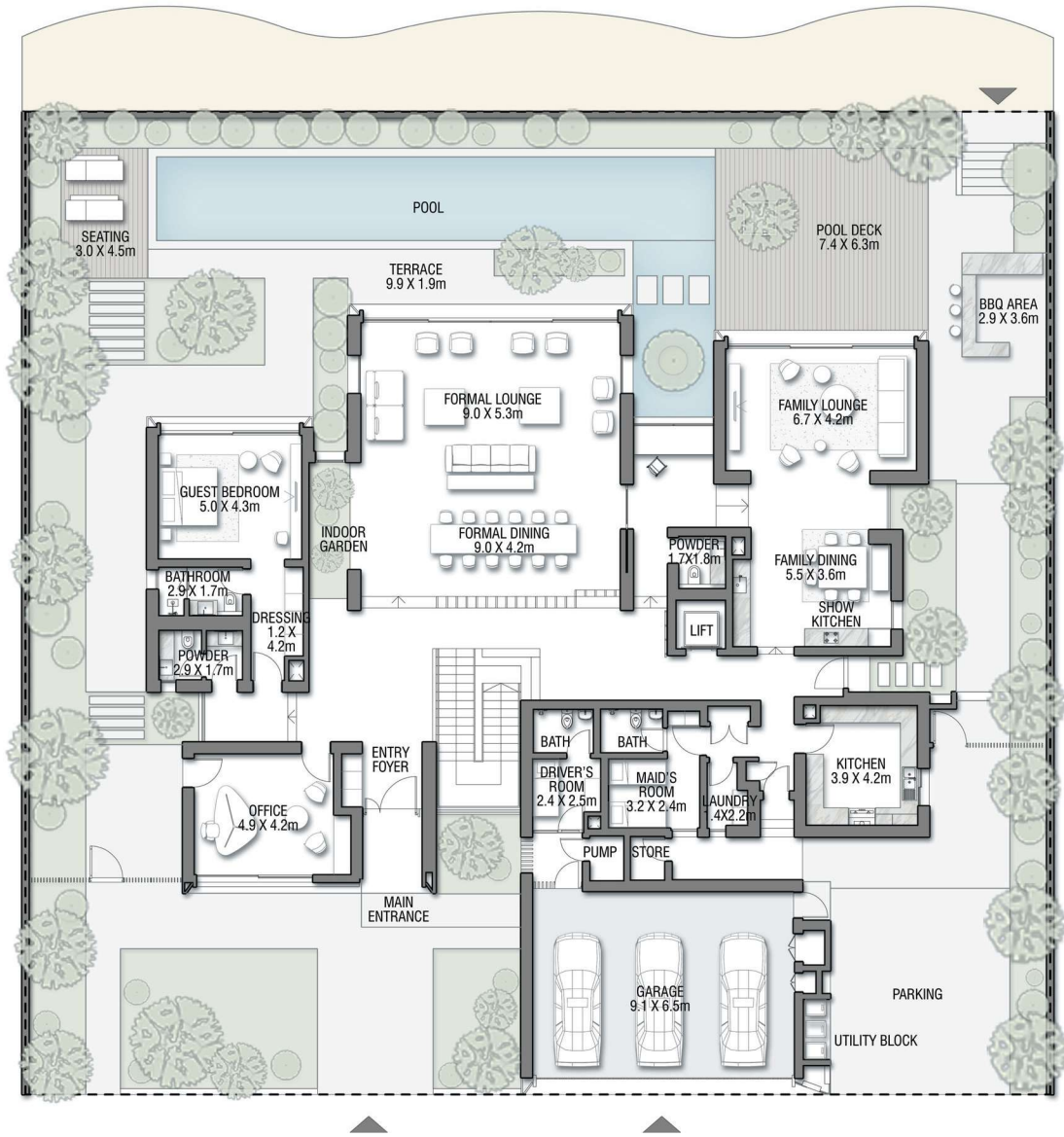
G + 2

6 BEDROOMS + FAMILY ROOM
+ ROOF LOUNGE AND TERRACE

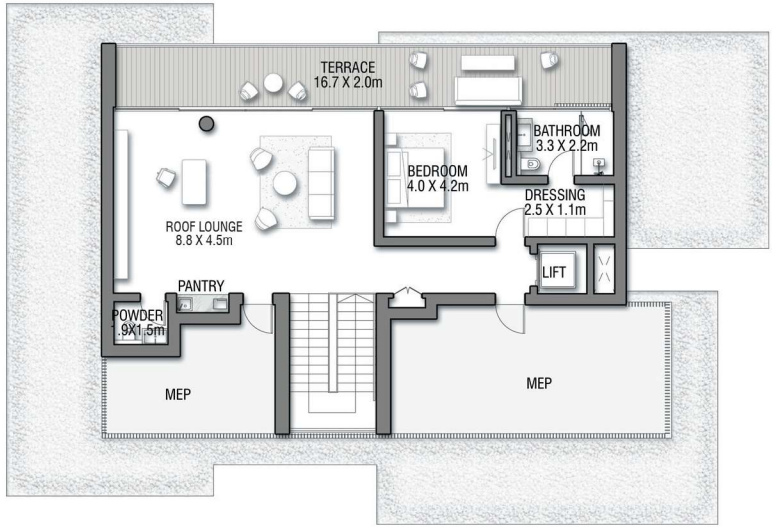
FLOOR TYPE	SQ. M.	SQ. FT.
Ground Floor	249.34	2,683.87
Balcony / Terrace / Porch – GF	6.57	70.72
First Floor Area	242.72	2,612.62
Balcony / Terrace – First Floor	17.04	183.42
Second Floor Area	116.07	1,249.37
Balcony / Terrace – Second Floor	44.10	474.69
Garage – Covered	48.66	523.77
TOTAL BUILT-UP AREA	724.50	7,798.45
Garage with Pergola	0.0	0.0
TOTAL AREA	724.50	7,798.45



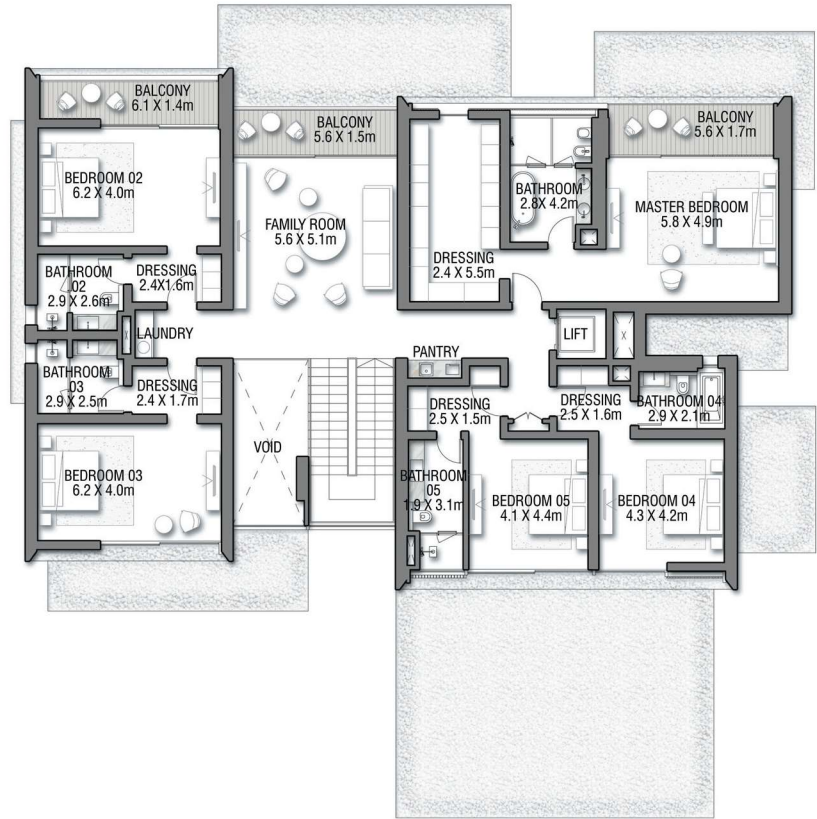
Numbers, square footage and floor plans are approximate. Final dimensions, square footage and floor plans may vary and are subject to change without notice. The developer reserves the right to make revisions. Built-Up Area is measured in accordance with Dubai Land Department standards. Plans, artistic renderings, landscaping and images are for illustrative purposes only and are subject to change without notice. Landscape shown is indicative and not provided by the developer. Pool layout and configuration shown on floor plans are for general illustrative purposes only and are not provided by the developer. The Bespoke Edition Option offered to the buyer at additional price will include a standard pool offering.



GROUND FLOOR



SECOND FLOOR



FIRST FLOOR

VILLA

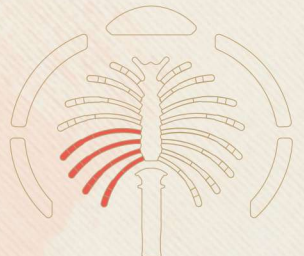
CORAL LIVING

Coral Villas Collection

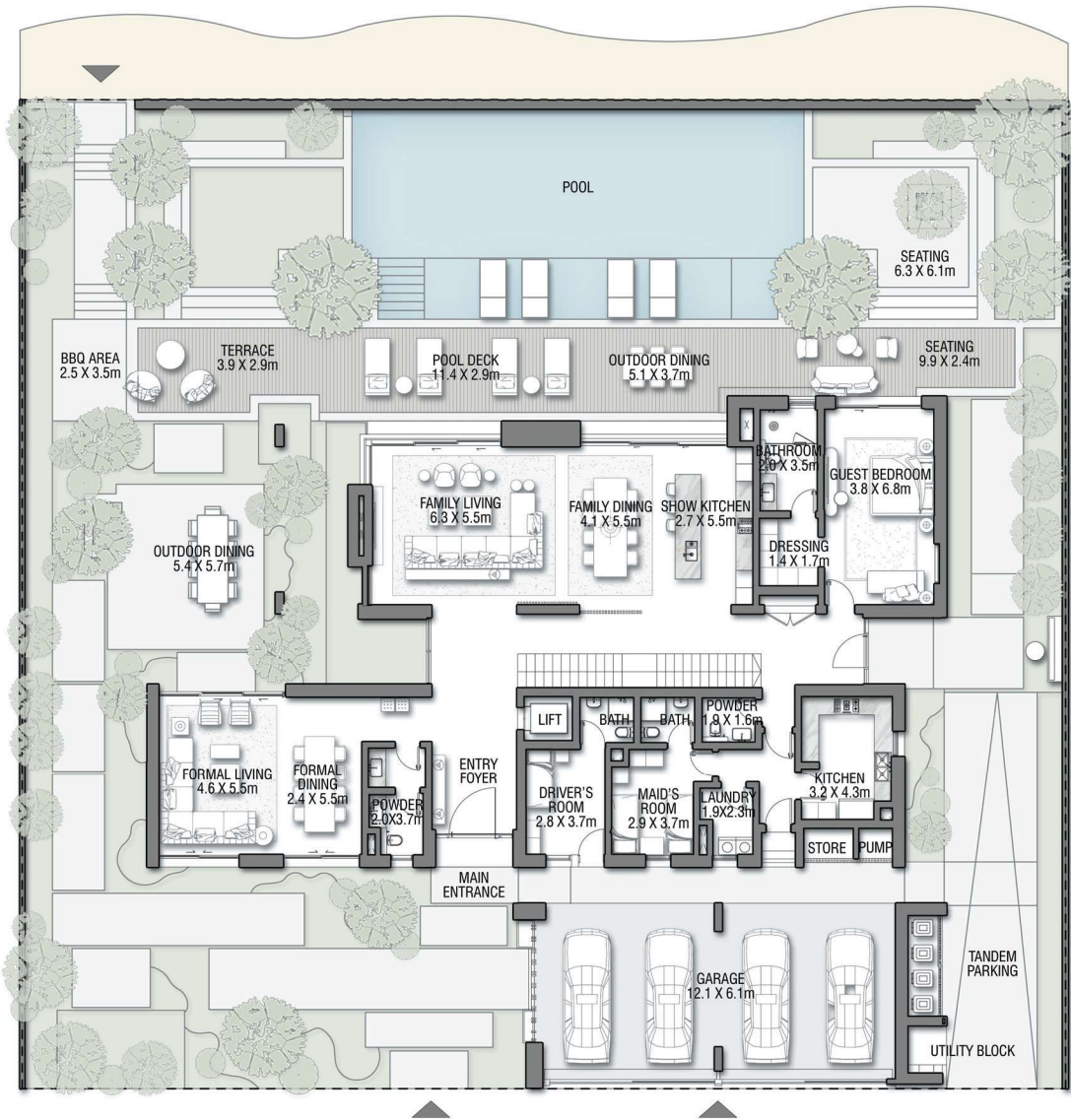
G + 2

7 BEDROOMS + FORMAL AND FAMILY LOUNGES
+ OFFICE + ROOF LOUNGE AND TERRACE

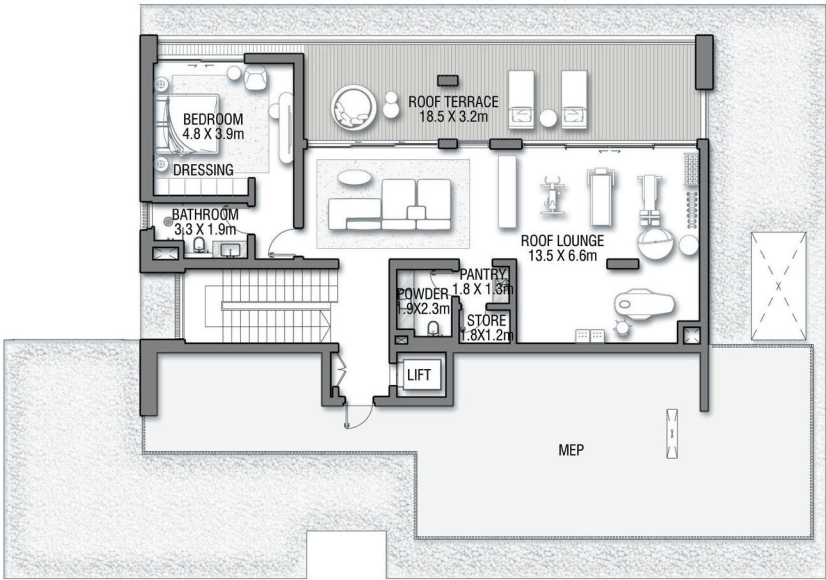
FLOOR TYPE	SQ. M.	SQ. FT.
Ground Floor	421.51	4,537.10
Balcony / Terrace / Porch – GF	7.24	77.93
First Floor Area	328.33	3,534.11
Balcony / Terrace – First Floor	26.35	283.63
Second Floor Area	138.29	1,488.54
Balcony / Terrace – Second Floor	35.84	385.78
Garage – Covered	85.00	914.93
TOTAL BUILT-UP AREA	1,042.56	11,222.02
Garage with Pergola	0.0	0.0
TOTAL AREA	1,042.56	11,222.02



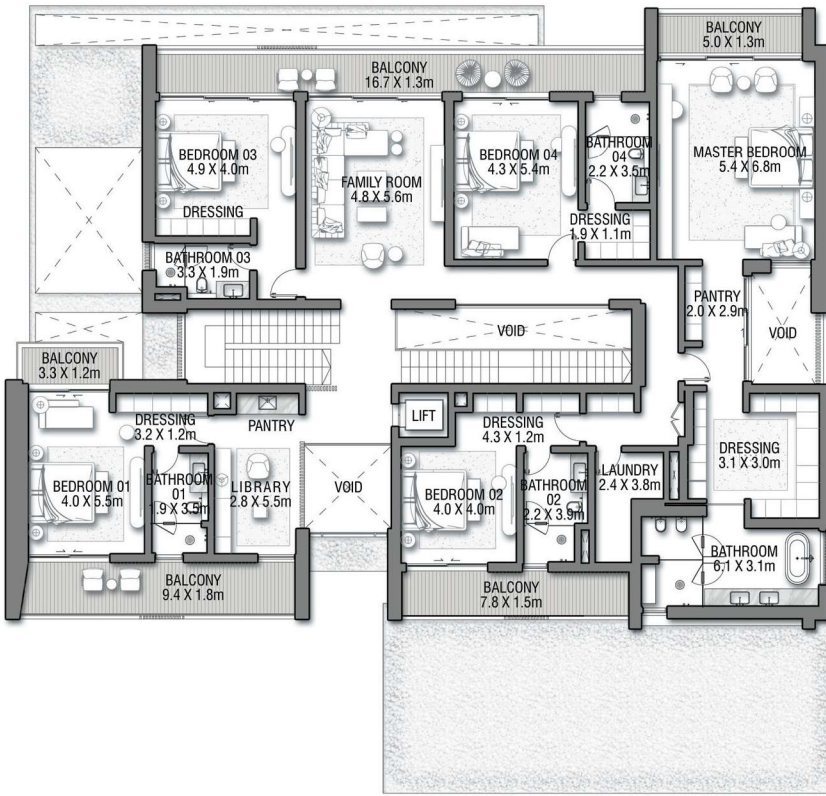
Numbers, square footage and floor plans are approximate. Final dimensions, square footage and floor plans may vary and are subject to change without notice. The developer reserves the right to make revisions. Built-Up Area is measured in accordance with Dubai Land Department standards. Plans, artistic renderings, landscaping and images are for illustrative purposes only and are subject to change without notice. Landscape shown is indicative and not provided by the developer. Pool layout and configuration shown on floor plans are for general illustrative purposes only and are not provided by the developer. The Bespoke Edition Option offered to the buyer at additional price will include a standard pool offering.



GROUND FLOOR



SECOND FLOOR



FIRST FLOOR

VILLA

CRANBERRY SKY

Coral Villas Collection

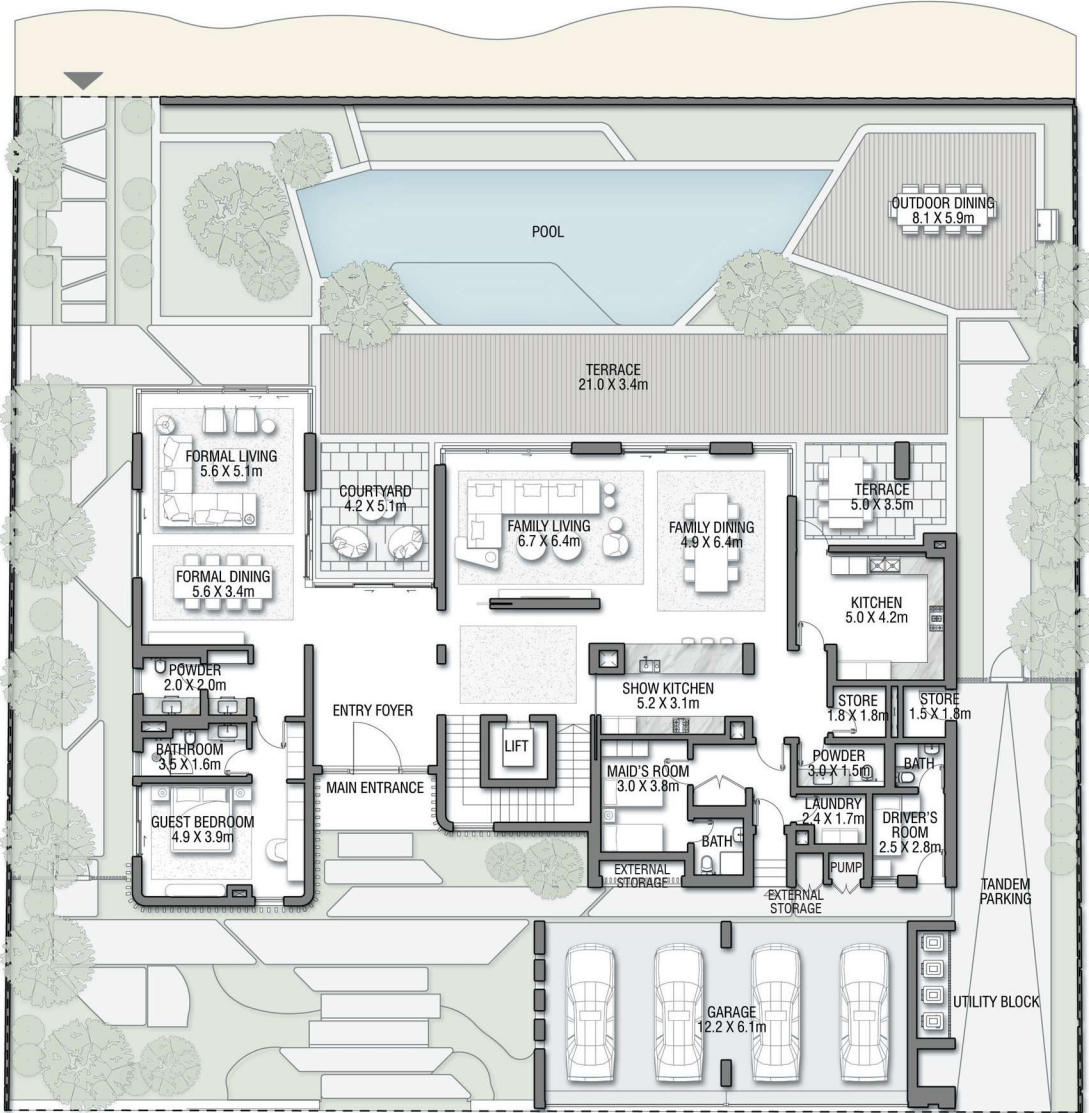
G + 2

7 BEDROOMS + FORMAL AND FAMILY LOUNGES
+ LIBRARY + ROOF LOUNGE AND TERRACE

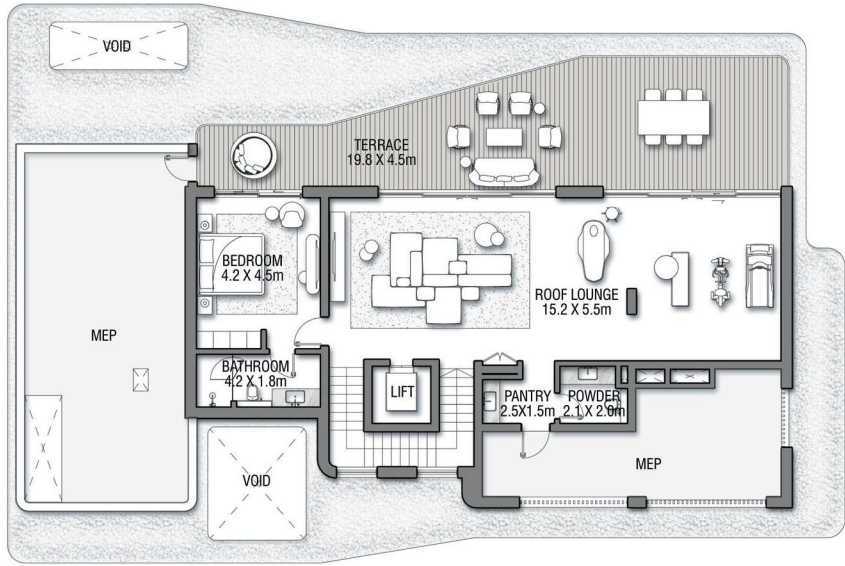
FLOOR TYPE	SQ. M.	SQ. FT.
Ground Floor	317.95	3,422.39
Balcony / Terrace / Porch - GF	4.12	44.35
First Floor Area	378.33	4,072.31
Balcony / Terrace - First Floor	72.09	775.97
Second Floor Area	155.42	1,672.93
Balcony / Terrace - Second Floor	50.18	540.13
Garage - Covered	85.45	919.78
TOTAL BUILT-UP AREA	1,063.54	11,447.85
Garage with Pergola	0.0	0.0
TOTAL AREA	1,063.54	11,447.85



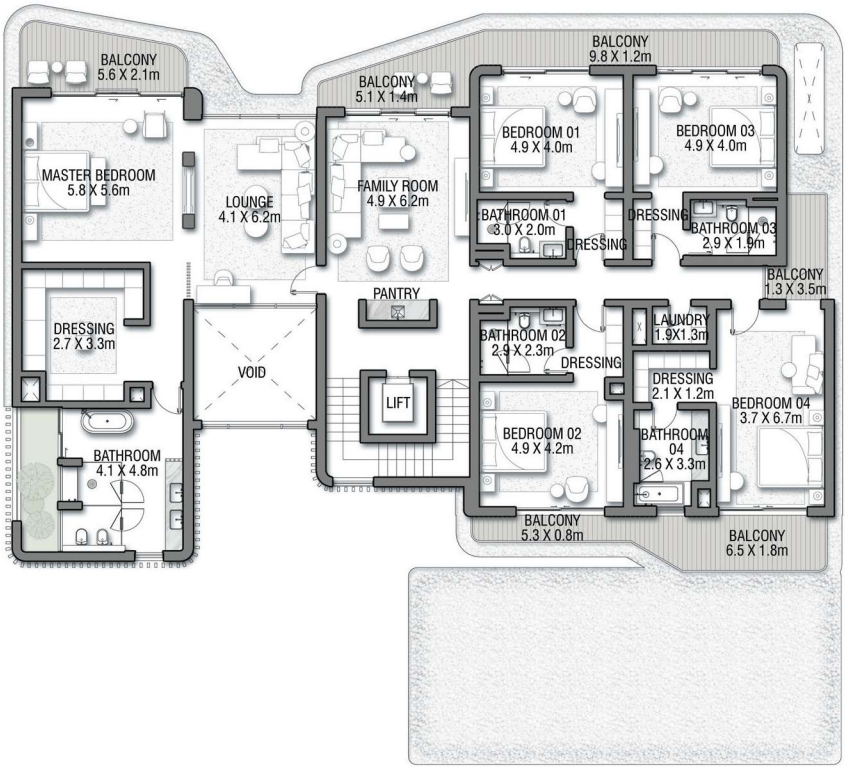
Numbers, square footage and floor plans are approximate. Final dimensions, square footage and floor plans may vary and are subject to change without notice. The developer reserves the right to make revisions. Built-Up Area is measured in accordance with Dubai Land Department standards. Plans, artistic renderings, landscaping and images are for illustrative purposes only and are subject to change without notice. Landscape shown is indicative and not provided by the developer. Pool layout and configuration shown on floor plans are for general illustrative purposes only and are not provided by the developer. The Bespoke Edition Option offered to the buyer at additional price will include a standard pool offering.



GROUND FLOOR



SECOND FLOOR



FIRST FLOOR

VILLA
HIBISCUS

Coral Villas Collection

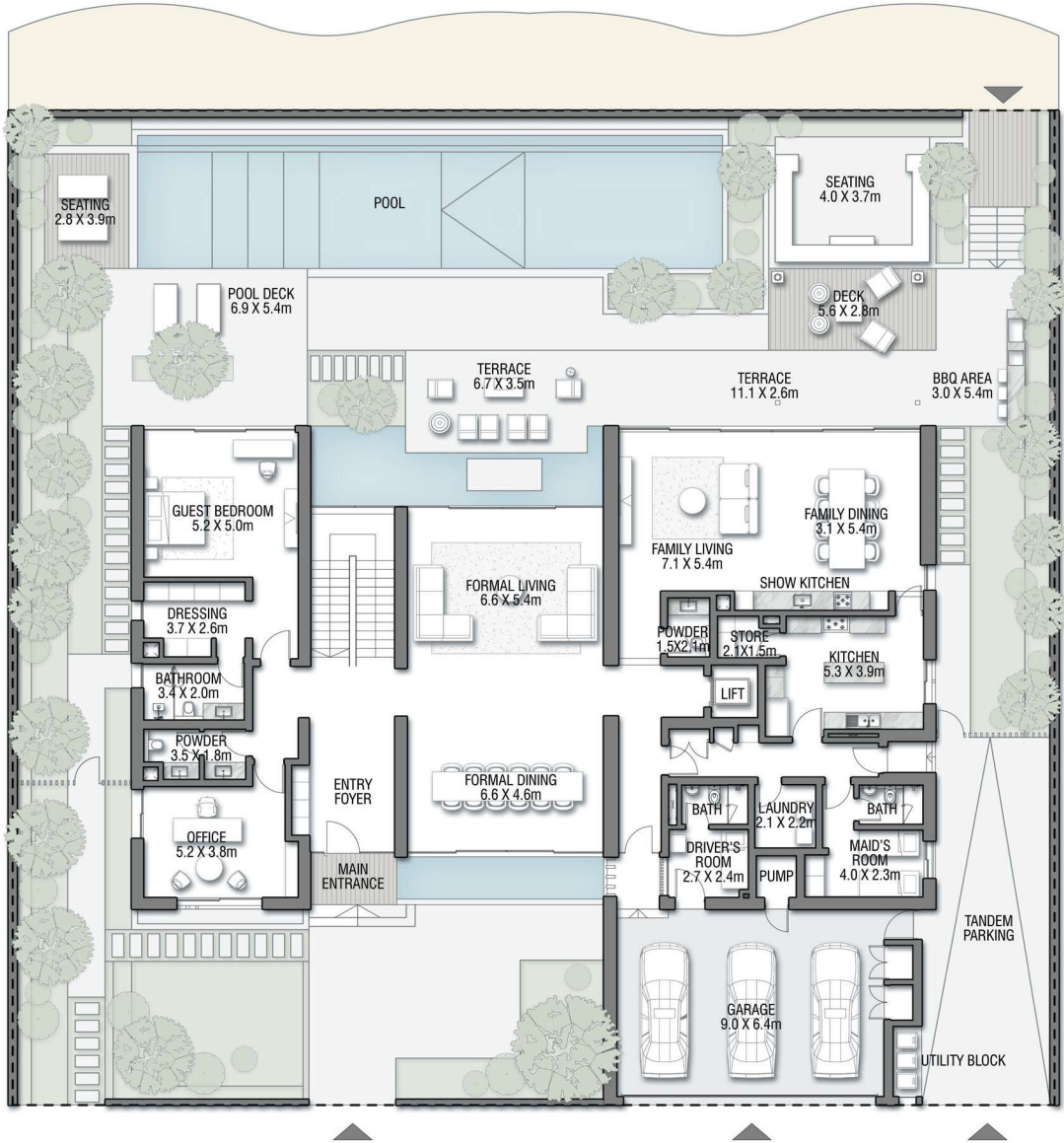
G + 2

7 BEDROOMS + FORMAL AND FAMILY LOUNGES
+ ROOF LOUNGE AND TERRACE

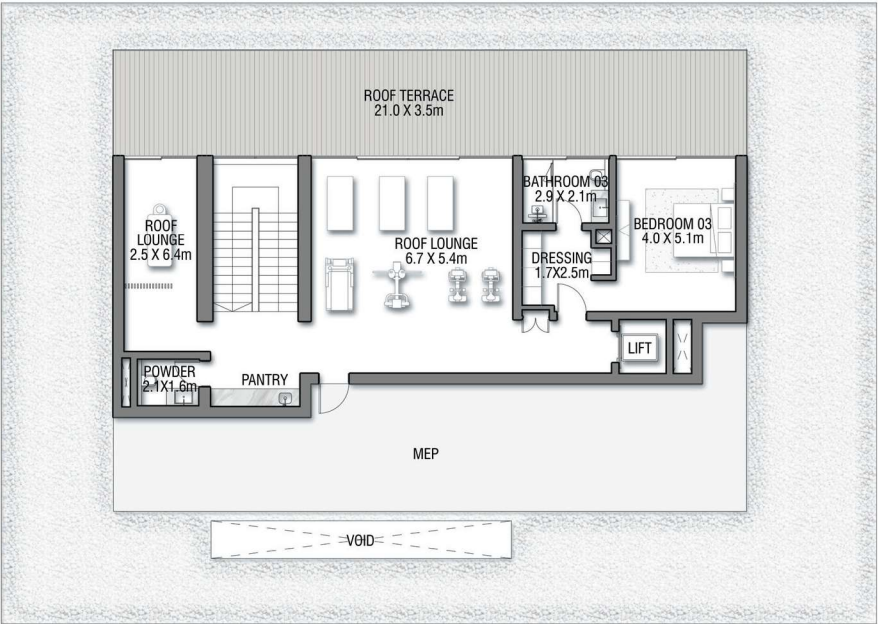
FLOOR TYPE	SQ. M.	SQ. FT.
Ground Floor	353.21	3,801.92
Balcony / Terrace / Porch-GF	20.94	225.40
First Floor Area	347.64	3,741.97
Balcony / Terrace - First Floor	74.18	798.47
Second Floor Area	157.93	1,699.94
Balcony / Terrace - Second Floor	75.18	809.23
Garage - Covered	86.45	930.54
TOTAL BUILT-UP AREA	1,115.53	12,007.46
Garage with Pergola	0.0	0.0
TOTAL AREA	1,115.53	12,007.46



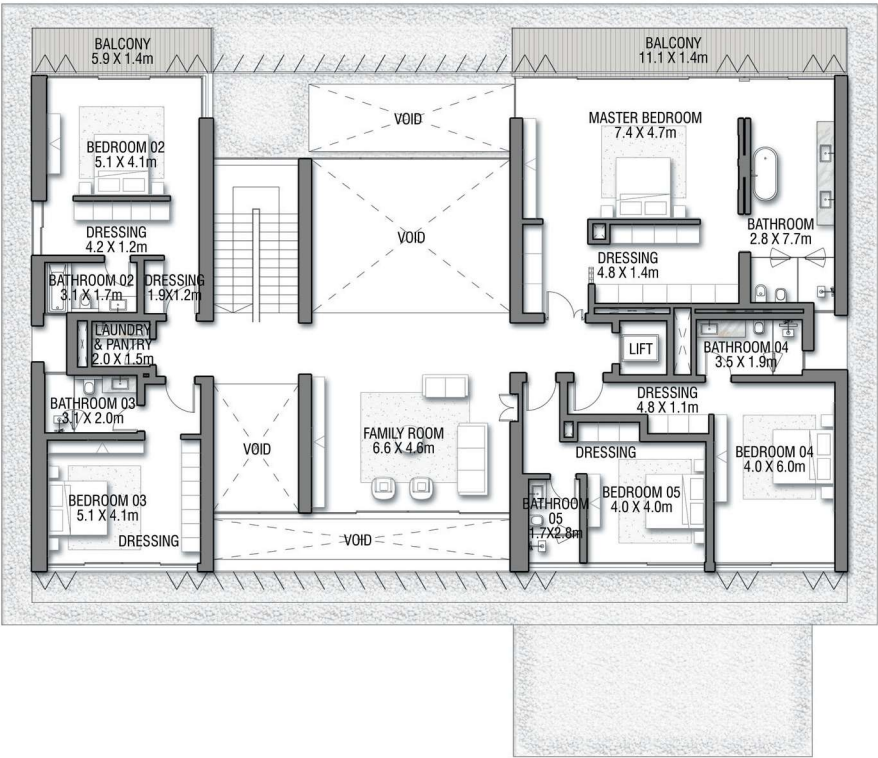
Numbers, square footage and floor plans are approximate. Final dimensions, square footage and floor plans may vary and are subject to change without notice. The developer reserves the right to make revisions. Built-Up Area is measured in accordance with Dubai Land Department standards. Plans, artistic renderings, landscaping and images are for illustrative purposes only and are subject to change without notice. Landscape shown is indicative and not provided by the developer. Pool layout and configuration shown on floor plans are for general illustrative purposes only and are not provided by the developer. The Bespoke Edition Option offered to the buyer at additional price will include a standard pool offering.



GROUND FLOOR



SECOND FLOOR



FIRST FLOOR

VILLA

PORCELAIN ROSES

Coral Villas Collection

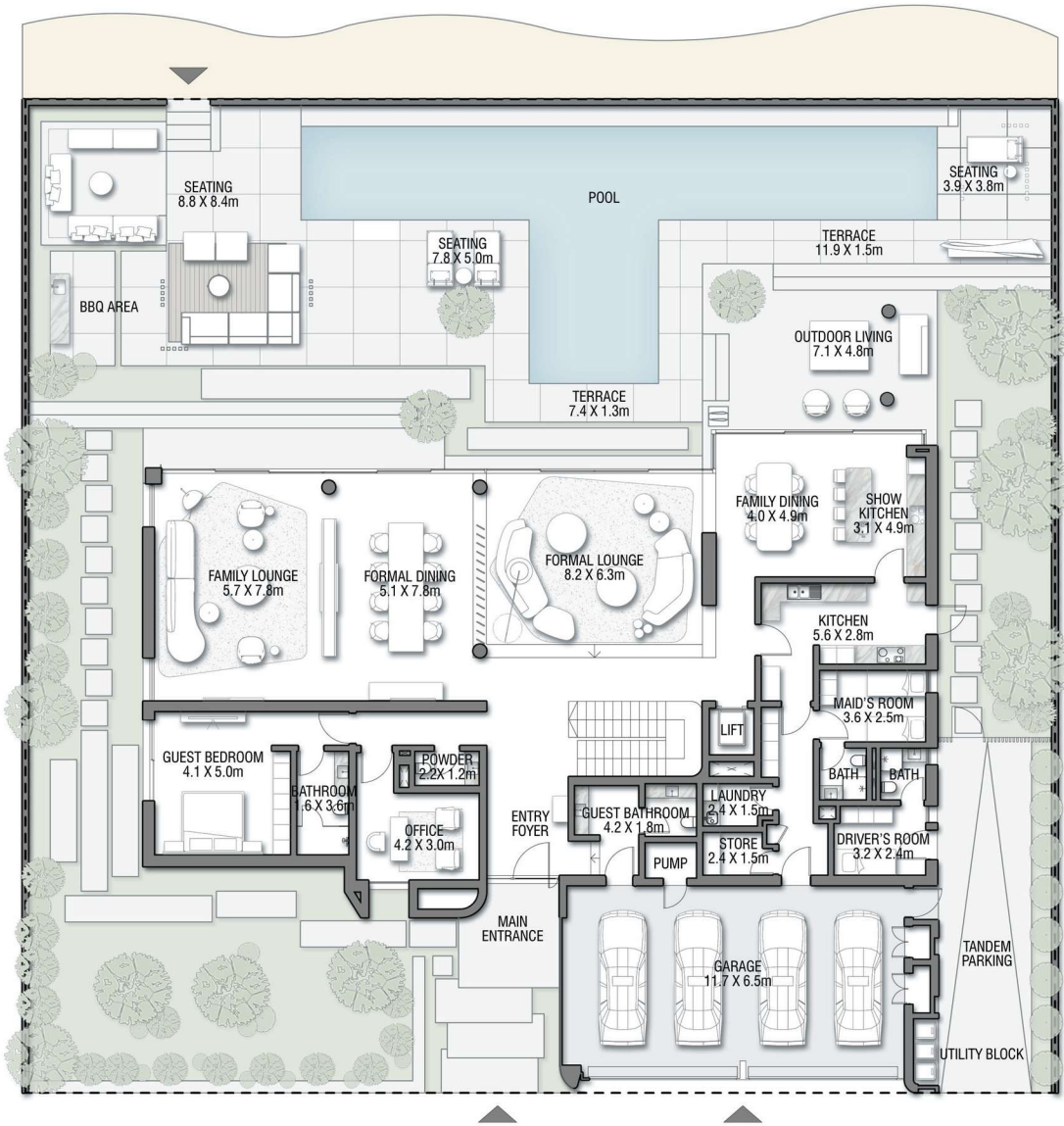
G + 2

7 BEDROOMS + FORMAL AND FAMILY LOUNGES
+ OFFICE + ROOF LOUNGE AND TERRACE

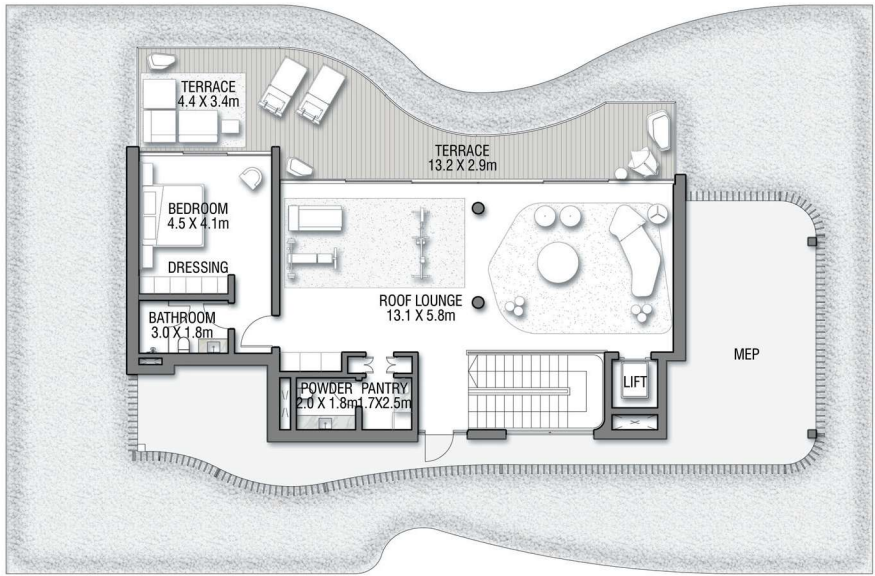
FLOOR TYPE	SQ. M.	SQ. FT.
Ground Floor	383.32	4,126.02
Balcony / Terrace / Porch-GF	2.01	21.64
First Floor Area	346.46	3,729.26
Balcony / Terrace - First Floor	25.64	275.99
Second Floor Area	161.19	1,735.03
Balcony / Terrace - Second Floor	75.32	810.74
Garage - Covered	77.30	832.05
TOTAL BUILT-UP AREA	1,071.24	11,530.73
Garage with Pergola	0.0	0.0
TOTAL AREA	1,071.24	11,530.73



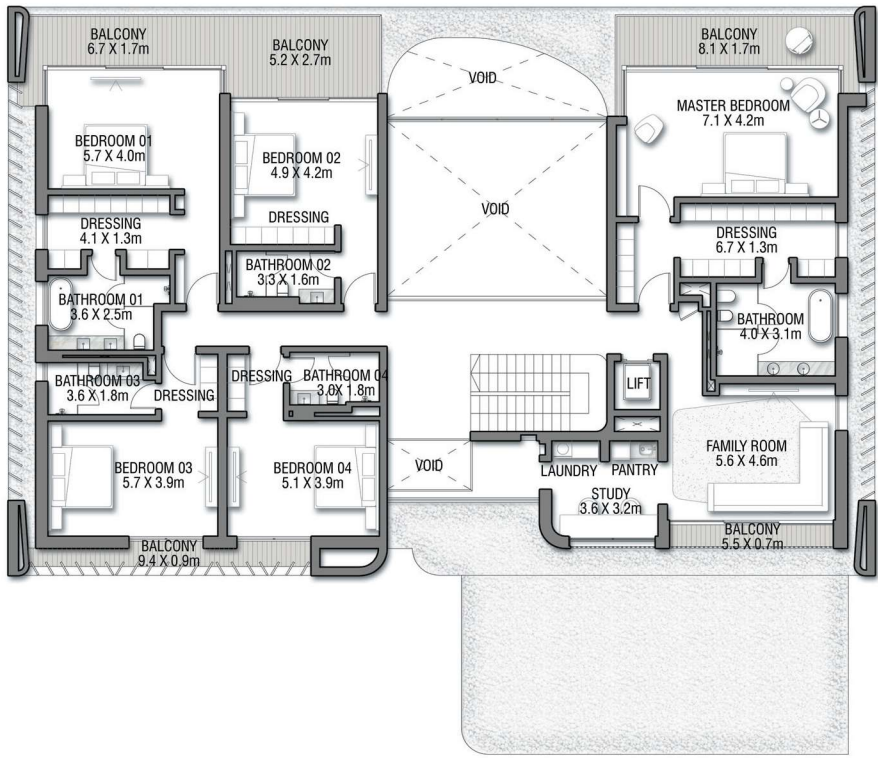
Numbers, square footage and floor plans are approximate. Final dimensions, square footage and floor plans may vary and are subject to change without notice. The developer reserves the right to make revisions. Built-Up Area is measured in accordance with Dubai Land Department standards. Plans, artistic renderings, landscaping and images are for illustrative purposes only and are subject to change without notice. Landscape shown is indicative and not provided by the developer. Pool layout and configuration shown on floor plans are for general illustrative purposes only and are not provided by the developer. The Bespoke Edition Option offered to the buyer at additional price will include a standard pool offering.



GROUND FLOOR



SECOND FLOOR



FIRST FLOOR

VILLA

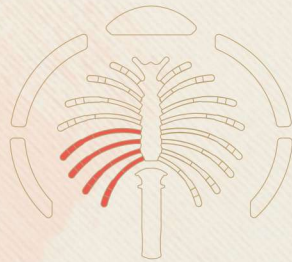
RED
AURORA

Coral Villas Collection

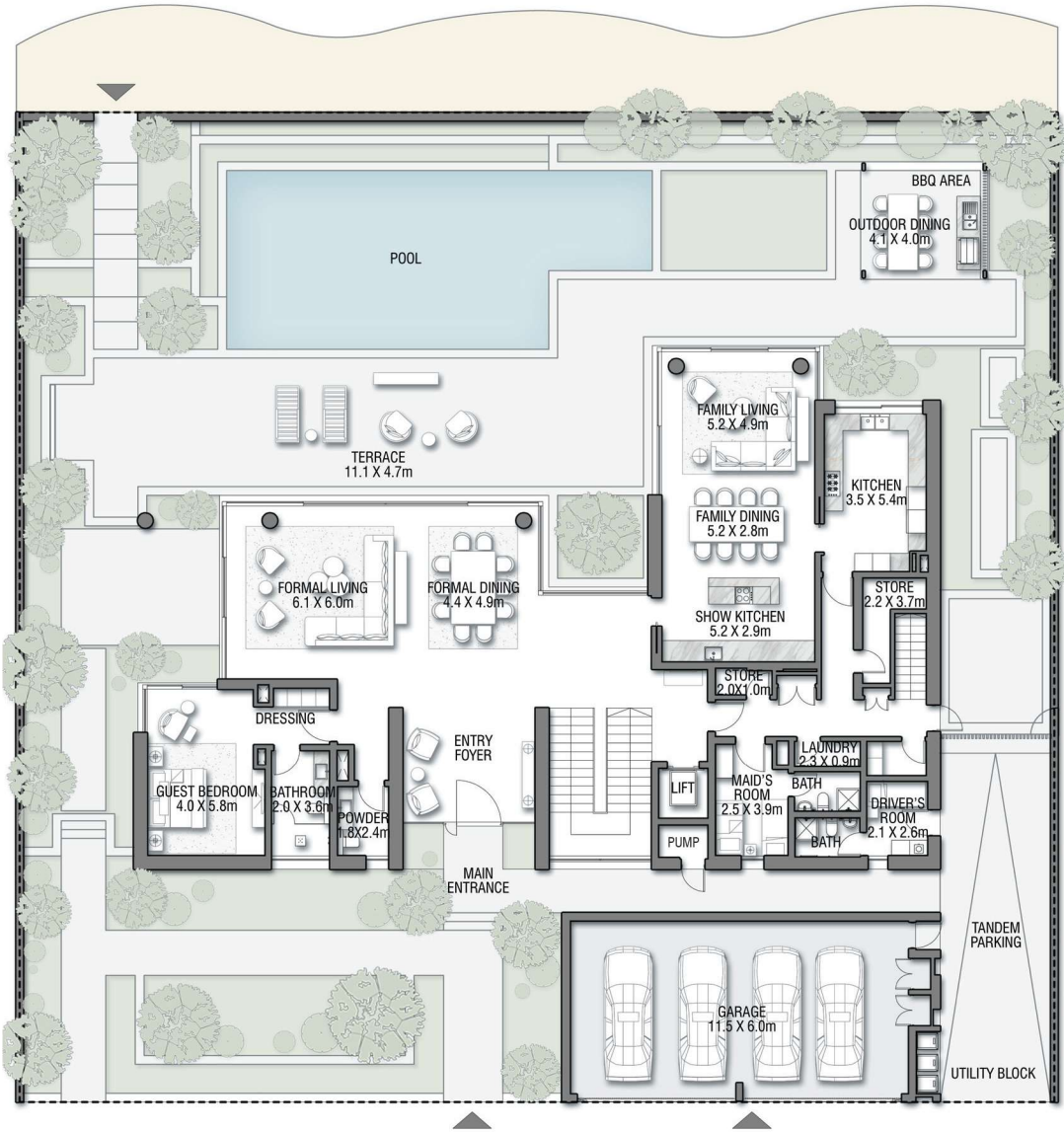
G + 2

7 BEDROOMS + FORMAL AND FAMILY LOUNGES
+ OFFICE + STUDY + ROOF LOUNGE
AND TERRACE

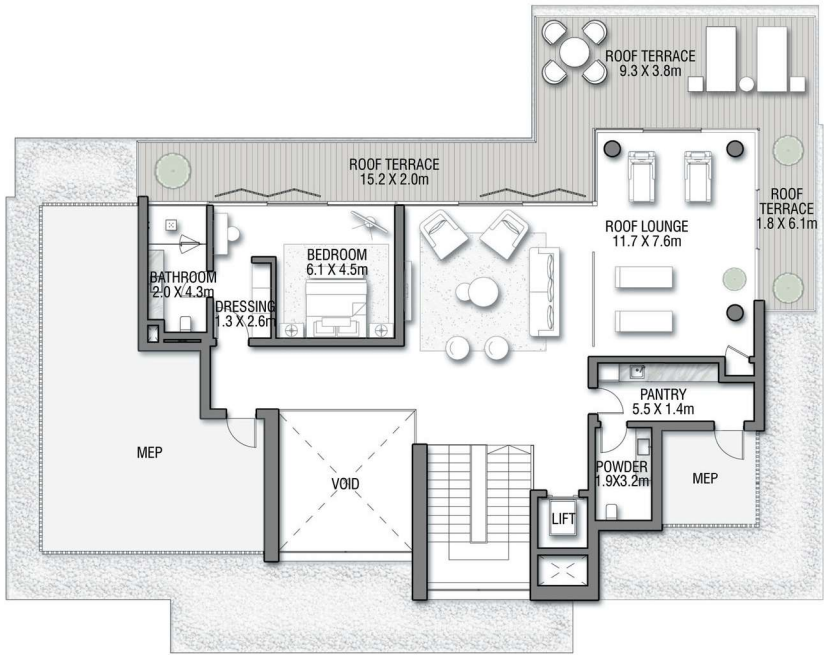
FLOOR TYPE	SQ. M.	SQ. FT.
Ground Floor	390.40	4,202.23
Balcony / Terrace / Porch-GF	0.0	0.0
First Floor Area	357.26	3,845.51
Balcony / Terrace - First Floor	46.21	497.40
Second Floor Area	151.29	1,628.47
Balcony / Terrace - Second Floor	50.47	543.25
Garage - Covered	85.01	915.04
TOTAL BUILT-UP AREA	1,080.64	11,631.91
Garage with Pergola	0.0	0.0
TOTAL AREA	1,080.64	11,631.91



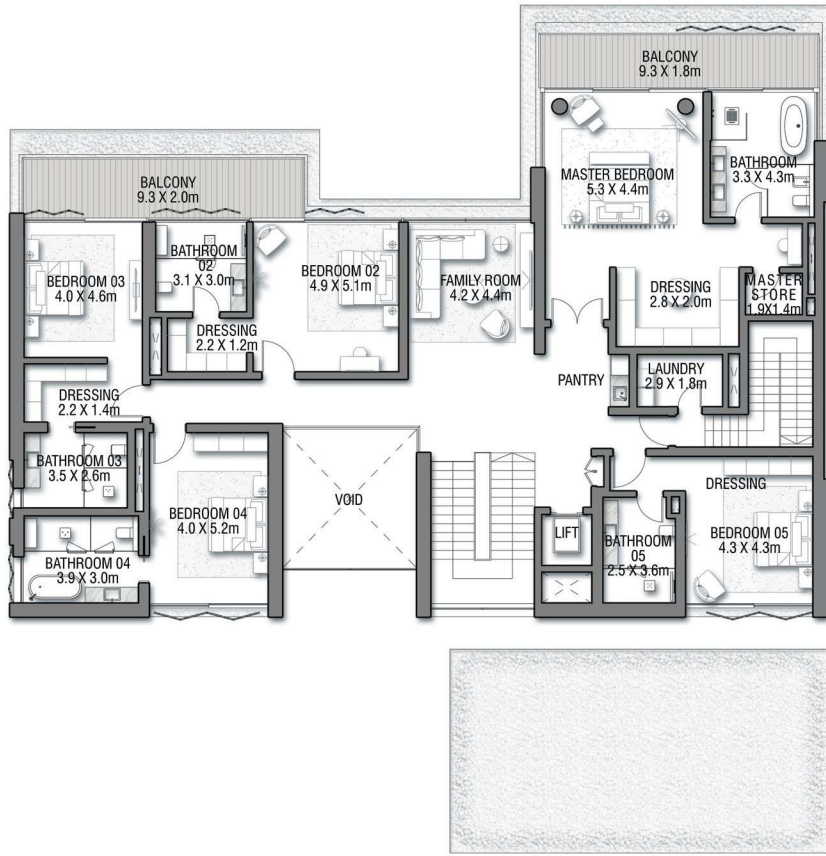
Numbers, square footage and floor plans are approximate. Final dimensions, square footage and floor plans may vary and are subject to change without notice. The developer reserves the right to make revisions. Built-Up Area is measured in accordance with Dubai Land Department standards. Plans, artistic renderings, landscaping and images are for illustrative purposes only and are subject to change without notice. Landscape shown is indicative and not provided by the developer. Pool layout and configuration shown on floor plans are for general illustrative purposes only and are not provided by the developer. The Bespoke Edition Option offered to the buyer at additional price will include a standard pool offering.



GROUND FLOOR



SECOND FLOOR



FIRST FLOOR

VILLA
REDWOOD

Coral Villas Collection

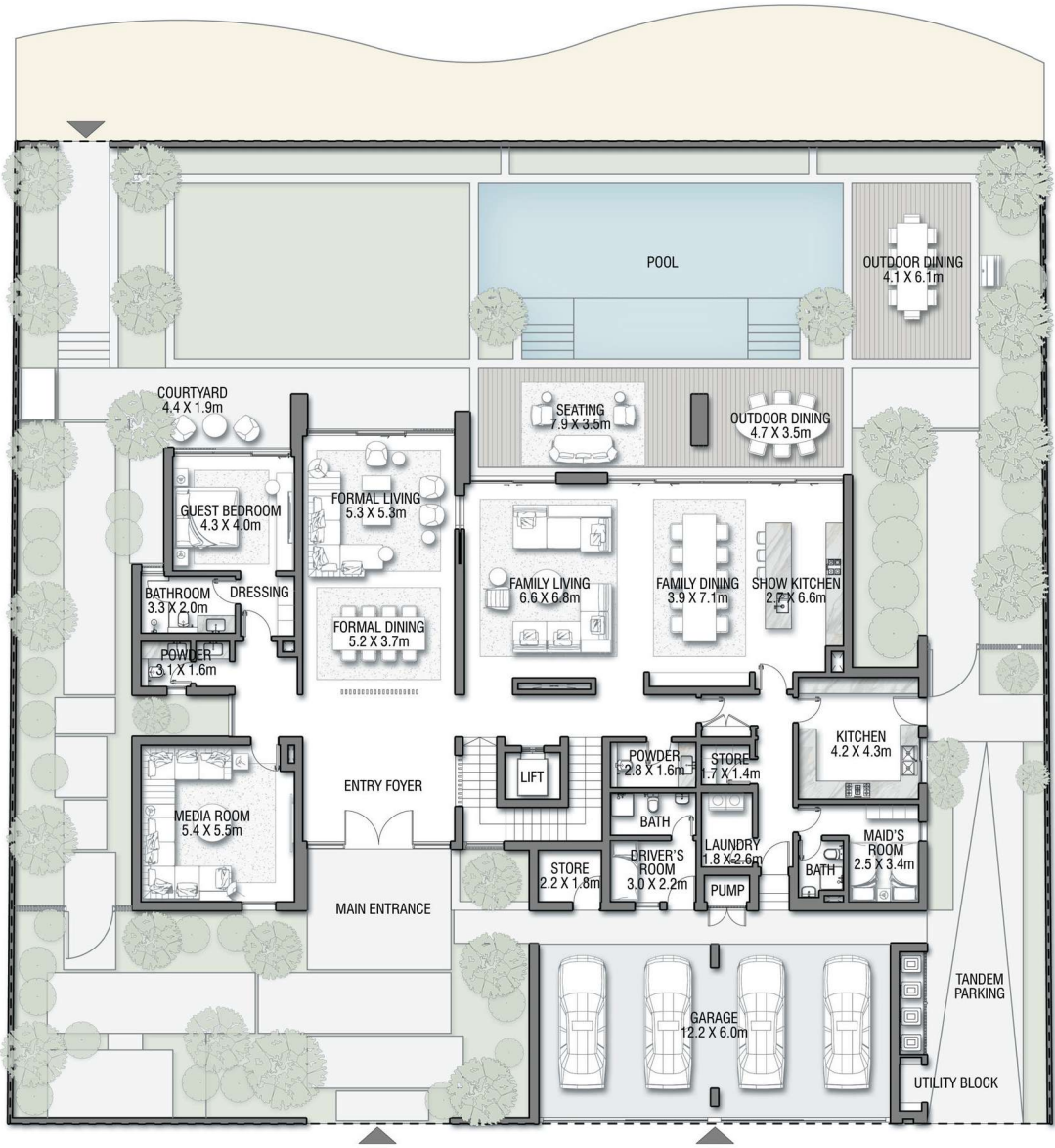
G + 2

7 BEDROOMS + FORMAL AND FAMILY LOUNGES
+ ROOF LOUNGE AND TERRACE

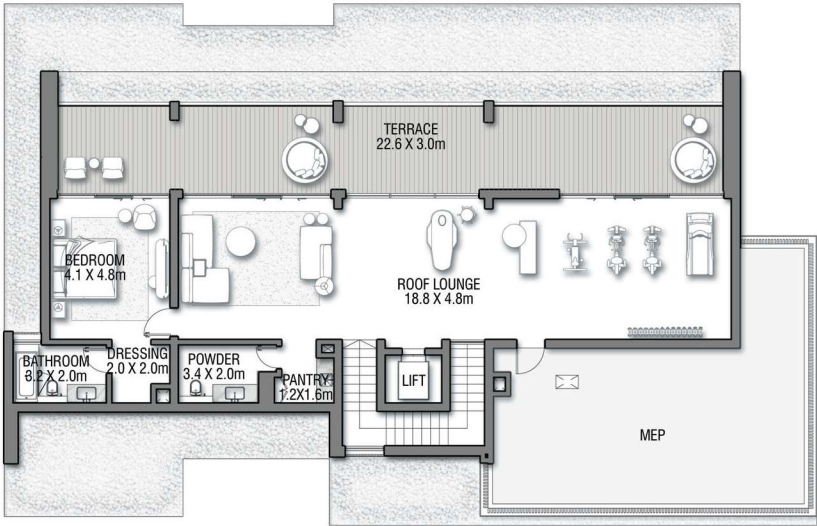
FLOOR TYPE	SQ. M.	SQ. FT.
Ground Floor	343.78	3,700.42
Balcony / Terrace / Porch-GF	6.44	69.32
First Floor Area	373.82	4,023.76
Balcony / Terrace - First Floor	36.75	395.57
Second Floor Area	209.40	2,253.96
Balcony / Terrace - Second Floor	78.29	842.71
Garage - Covered	81.72	879.63
TOTAL BUILT-UP AREA	1,130.20	12,165.37
Garage with Pergola	0.0	0.0
TOTAL AREA	1,130.20	12,165.37



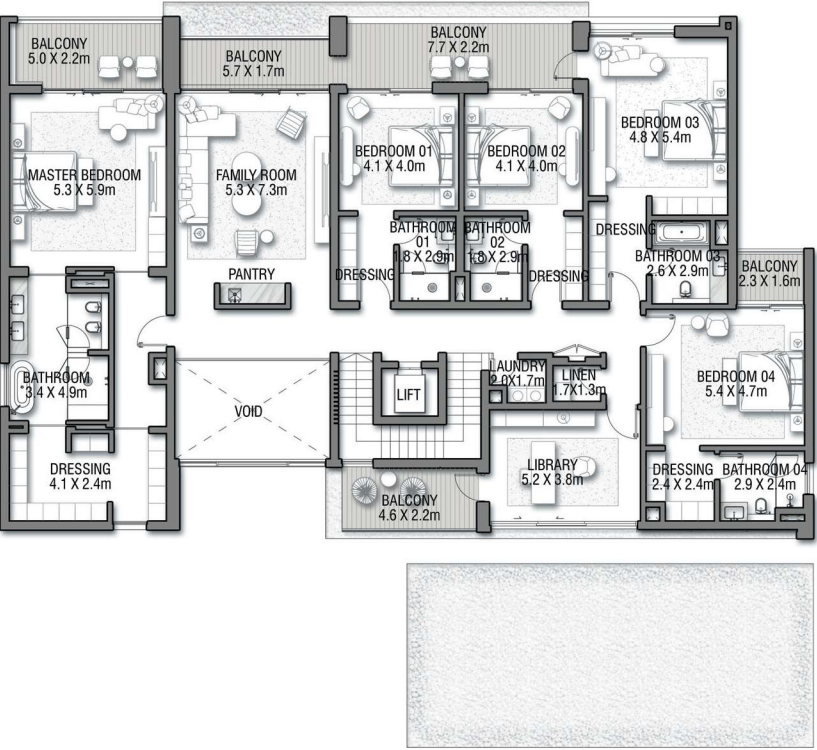
Numbers, square footage and floor plans are approximate. Final dimensions, square footage and floor plans may vary and are subject to change without notice. The developer reserves the right to make revisions. Built-Up Area is measured in accordance with Dubai Land Department standards. Plans, artistic renderings, landscaping and images are for illustrative purposes only and are subject to change without notice. Landscape shown is indicative and not provided by the developer. Pool layout and configuration shown on floor plans are for general illustrative purposes only and are not provided by the developer. The Bespoke Edition Option offered to the buyer at additional price will include a standard pool offering.



GROUND FLOOR



SECOND FLOOR



FIRST FLOOR

VILLA

RUBY SUNSET

Coral Villas Collection

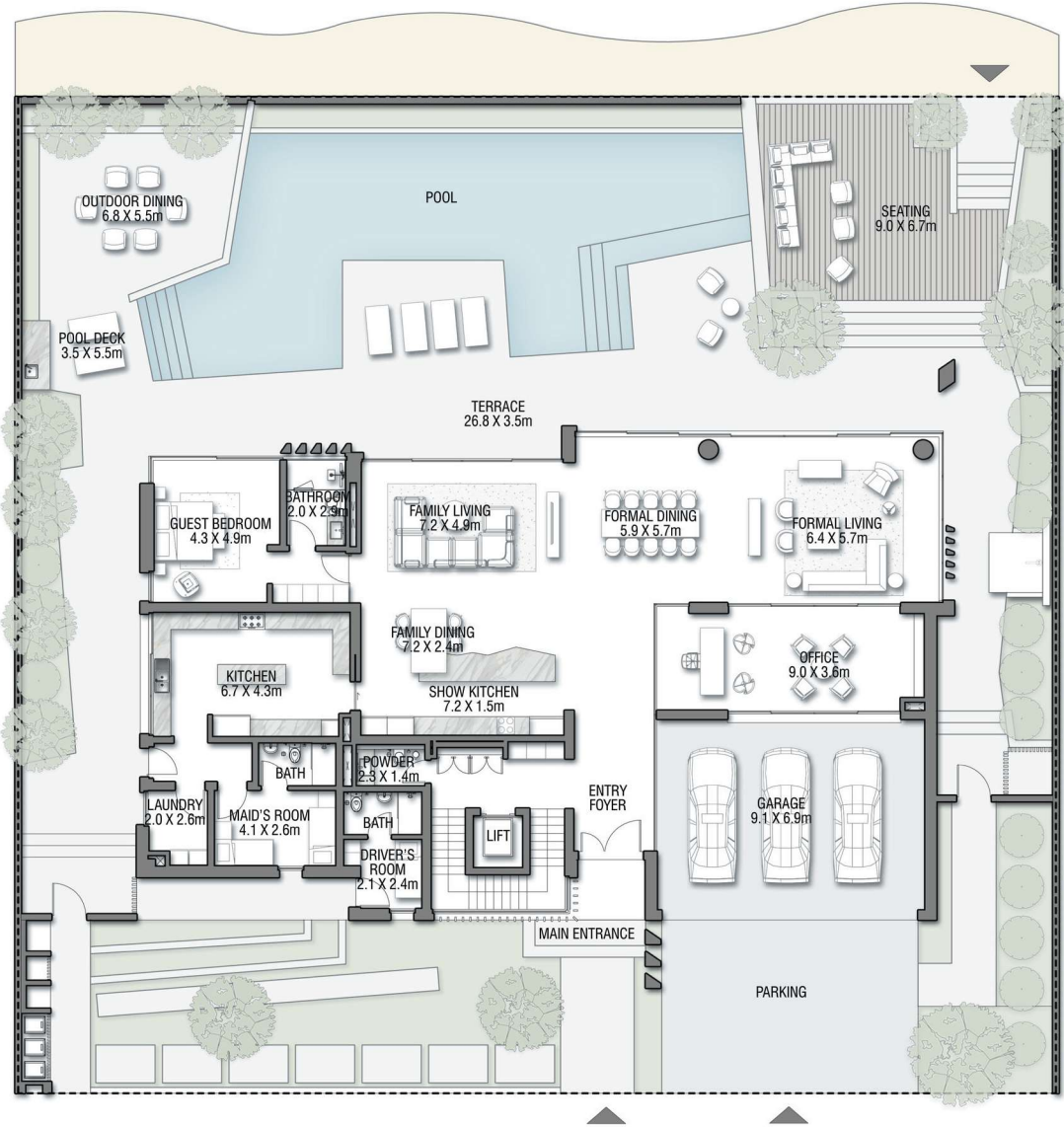
G + 2

7 BEDROOMS + FORMAL AND FAMILY LOUNGES
+ LIBRARY + MEDIA ROOM + ROOF LOUNGE
AND TERRACE

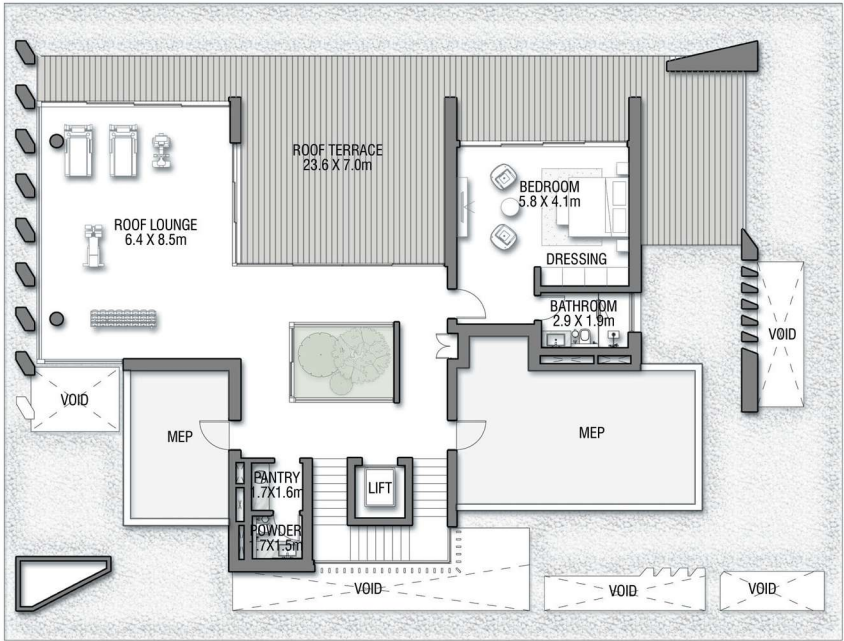
FLOOR TYPE	SQ. M.	SQ. FT.
Ground Floor	381.38	4,105.14
Balcony / Terrace / Porch-CF	1.38	14.85
First Floor Area	362.65	3,903.53
Balcony / Terrace – First Floor	60.00	645.83
Second Floor Area	166.90	1,796.50
Balcony / Terrace – Second Floor	72.71	782.64
Garage – Covered	84.26	906.97
TOTAL BUILT-UP AREA	1,129.28	12,155.47
Garage with Pergola	0.0	0.0
TOTAL AREA	1,129.28	12,155.47



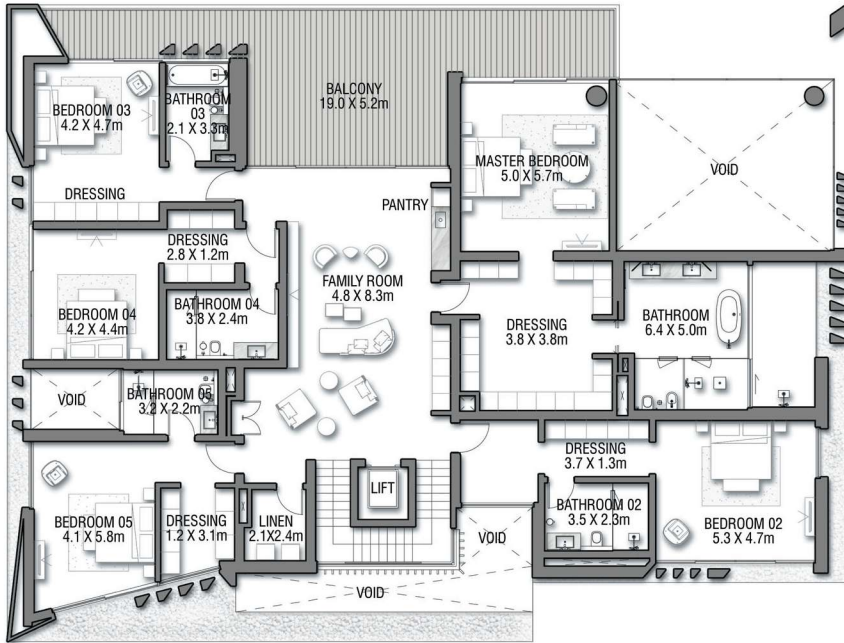
Numbers, square footage and floor plans are approximate. Final dimensions, square footage and floor plans may vary and are subject to change without notice. The developer reserves the right to make revisions. Built-Up Area is measured in accordance with Dubai Land Department standards. Plans, artistic renderings, landscaping and images are for illustrative purposes only and are subject to change without notice. Landscape shown is indicative and not provided by the developer. Pool layout and configuration shown on floor plans are for general illustrative purposes only and are not provided by the developer. The Bespoke Edition Option offered to the buyer at additional price will include a standard pool offering.



GROUND FLOOR



SECOND FLOOR



FIRST FLOOR

VILLA

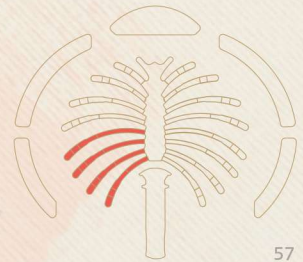
TERRACOTTA

Coral Villas Collection

G + 2

7 BEDROOMS + FORMAL AND FAMILY LOUNGES
+ SHOW GARAGE + OFFICE + ROOF LOUNGE
AND TERRACE

FLOOR TYPE	SQ. M.	SQ. FT.
Ground Floor	351.58	3,784.38
Balcony / Terrace / Porch-GF	0.0	0.0
First Floor Area	365.54	3,934.64
Balcony / Terrace - First Floor	73.21	788.03
Second Floor Area	180.54	1,943.32
Balcony / Terrace - Second Floor	92.52	995.88
Garage - Covered	64.50	694.27
TOTAL BUILT-UP AREA	1,127.89	12,140.51
Garage with Pergola	0.0	0.0
TOTAL AREA	1,127.89	12,140.51



Numbers, square footage and floor plans are approximate. Final dimensions, square footage and floor plans may vary and are subject to change without notice. The developer reserves the right to make revisions. Built-Up Area is measured in accordance with Dubai Land Department standards. Plans, artistic renderings, landscaping and images are for illustrative purposes only and are subject to change without notice. Landscape shown is indicative and not provided by the developer. Pool layout and configuration shown on floor plans are for general illustrative purposes only and are not provided by the developer. The Bespoke Edition Option offered to the buyer at additional price will include a standard pool offering.



SIKANDAR

a RERA-certified Dubai realtor



+971 58 561 3700

www.sikandar.ae



sikandar



syedsikandar369



syedsikandar369



sikandar369